

WHY ENDLESS SURF?



A LONG-TERM COMPANY FOR YOUR LONG-TERM INVESTMENT



Everything Your Park Needs

Our owner-operator understanding of what a park needs to be successful has shaped the progression of our offerings so that we now provide all the attractions a water park or surf park needs. We have built this in service of you, so we can provide you with the right product or service to maximize the long-term success and growth of your park. Beyond these types of parks, we leverage our knowledge of how to make fun with water to create an award-winning line of water rides for theme parks, zoos, and surprisingly, more and more water parks. Add in our technology brand, Vantage, to the mix, and you now have cashless payments and real-time park data on top of our complete product suite.



WIE ES FUNKTIONIERT ?!

Das pneumatische System von Endless Surf gibt dir Kraft und betrieblichen Spielraum wie keine andere Welle auf dem Markt.

AUS: Der Wasserstand im Becken ist gleich dem Niveau im Caisson.

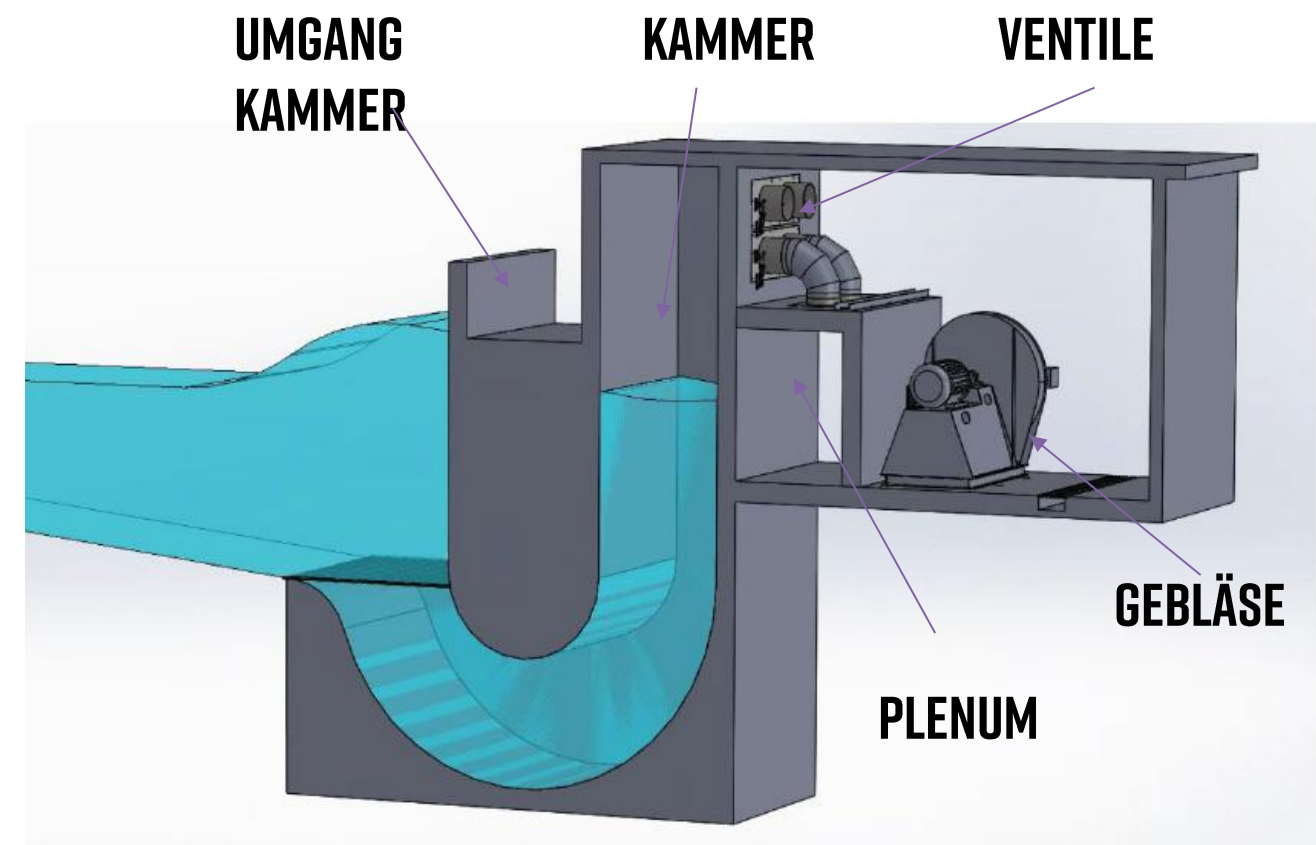
VORBEREITUNG: Der Wasserstand im Caisson ist niedriger als im Becken.

BEREIT: Luft wird abgelassen, wodurch der Wasserstand schnell ansteigt.

AUSLÖSEN: Wasser wird beim Wiederherstellen des Drucks herausgepresst, wodurch eine Welle

EINE WUNDERBARE ENTDECKUNG

Um die Effizienz zu steigern, haben wir den **J-förmigen** Caisson entwickelt. Dadurch konnten wir auch begehbaren Raum für die Promenade schaffen.



DIE KÖPFE HINTER DEM ERLEBNIS

SURF CONCIERGE

GÄSTEBUCHUNGEN UND
HAFTUNGSVERZICHTSERKLÄRUNGEN

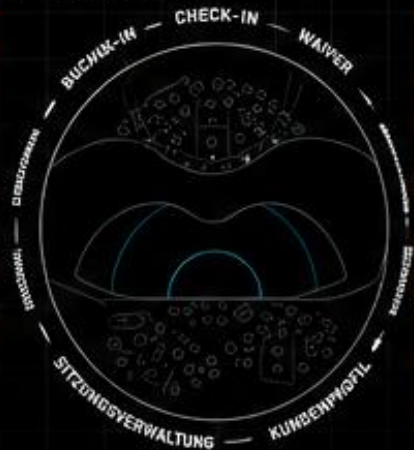
GAST #2487

SITZUNGSTYP
PRIVAT

ALTERSGRUPPE
25-34

FÄHIGKEITSNIVEAU
FORTGESCHRITTEN

HAFTUNGSVERZICHT
UNTERSCHRIEBEN



GAST #4791

SITZUNGSTYP
GRUPPE

ALTERSGRUPPE
18-24

FÄHIGKEITSNIVEAU
ANFÄNGER

HAFTUNGSVERZICHT
UNTERSCHRIEBEN

GÄSTEBUCHUNGEN UND
HAFTUNGSVERZICHTSERKLÄRUNGEN

GEMEINSAM:

VERKNÜPFUNG DES GÄSTEERLEBNISSES
MIT DEM VENUE-BETRIEB,
UM DAS BESTMÖGLICHE
ERLEBNIS ZU GEWÄHRLEISTEN.

SWELL STUDIO

WELLENERZEUGUNG UND
SESSION-PROGRAMMIERUNG

POOLKAPAZITÄT: 90%

WASSERSTAND: OPTIMAL

BETRIEBSMODUS
WELLE SPITZ, MANUELL

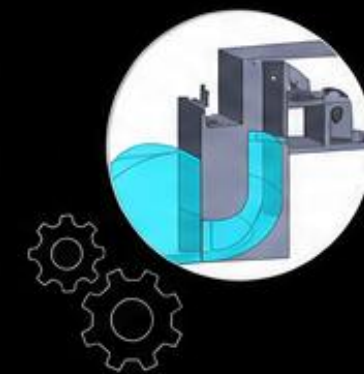
DAUER
0:25



WELLENERZEUGUNG UND
SESSION-PROGRAMMIERUNG

WAVE DOCTOR

VORAUSSCHAUENDE WARTUNG
UND ÜBERWACHUNG



ANZAHL DER WELLEN: 3208

NÄCHSTE WARTUNG IN: 11 MONATEN

GESAMTE BETRIEBSSTUNDEN: 437

VORAUSSCHAUENDE WARTUNG
UND ÜBERWACHUNG

ENDLESS POSSIBILITIES

WAVES, VIEWS, AND EXPERIENCES THAT 'WOW'

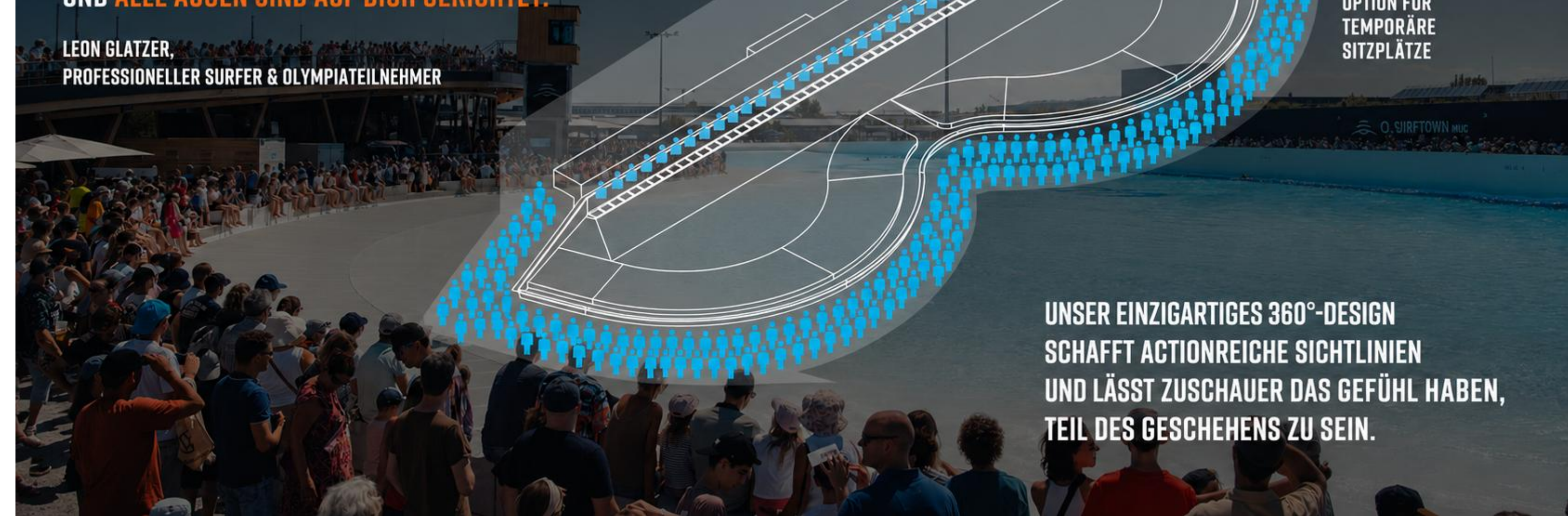
WILLKOMMEN IM RÖMISCHEN KOLOSSEUM DES SURFENS

“HINAUSZUPADDELN FÜHLTE SICH AN,
ALS WÜRD MAN DAS **RÖMISCHE KOLOSSEUM**
BETRETEN – DU BIST MITTEN IN DER ARENA,
UMGEBEN VON ENERGIE,
UND **ALLE AUGEN SIND AUF DICH GERICHTET.**“

LEON GLATZER,
PROFESSIONELLER SURFER & OLYMPIATEILNEHMER

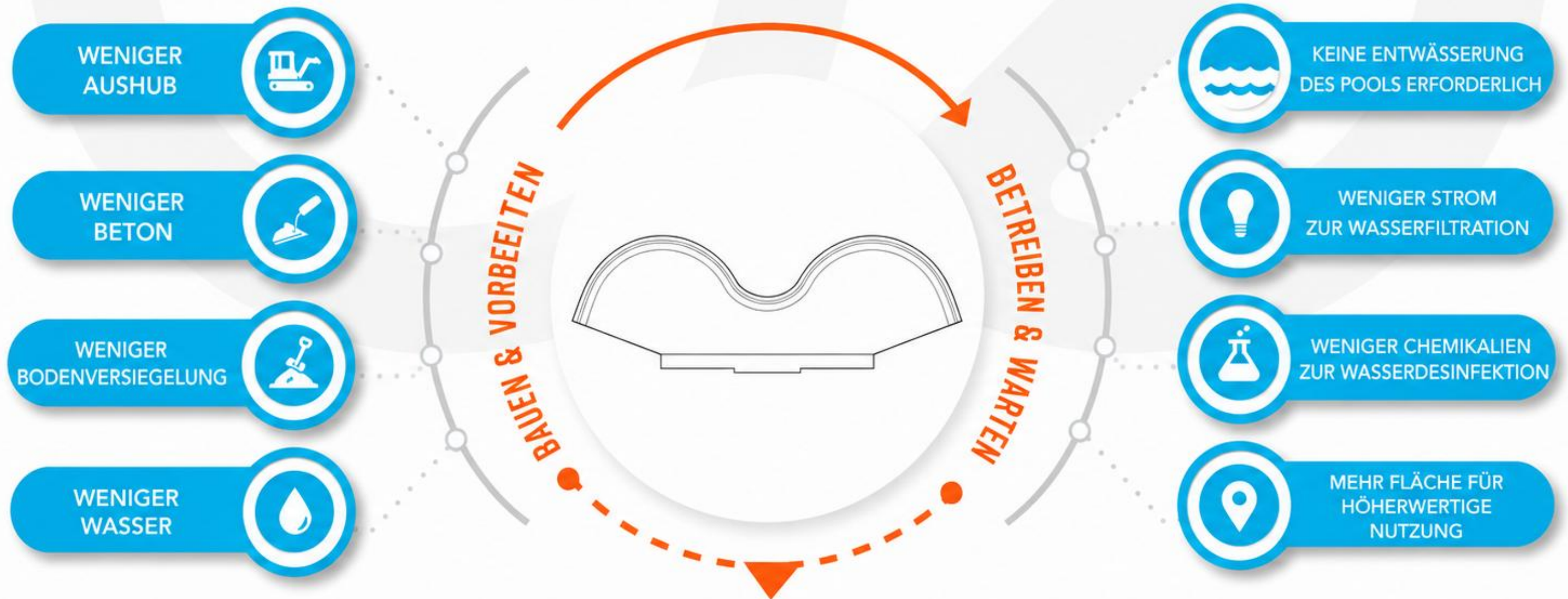
OPTION FÜR
TEMPORÄRE
SITZPLÄTZE

UNSER EINZIGARTIGES 360°-DESIGN
SCHAFFT ACTIONREICHE SICHTLINIEN
UND LÄSST ZUSCHAUER DAS GEFÜHL HABEN,
TEIL DES GESCHEHENS ZU SEIN.



EFFIZIENZ DURCH KOMPAKTES DESIGN

WENIGER IST MEHR BEI DEM EFFIZIENTESTEN
UND BESSER DURCHDACHTEN SURF-POOL AUF DEM MARKT.

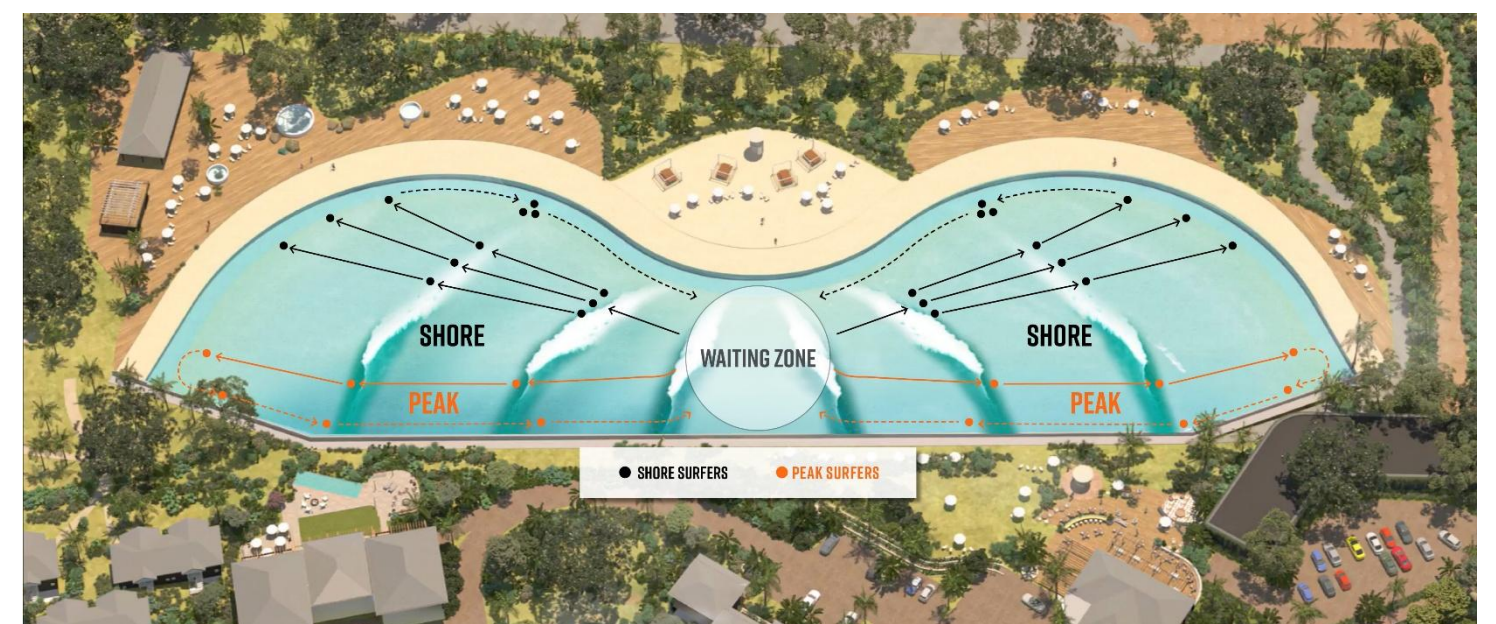


Endless Surf sorgt für **BESSERE WIRTSCHAFTLICHE LEISTUNG** bei **GERINGEREN UMWELTAUSWIRKUNGEN.**



SPLIT PEAK: HOHE KAPAZITÄT UND GEMEINSAMER SPASS

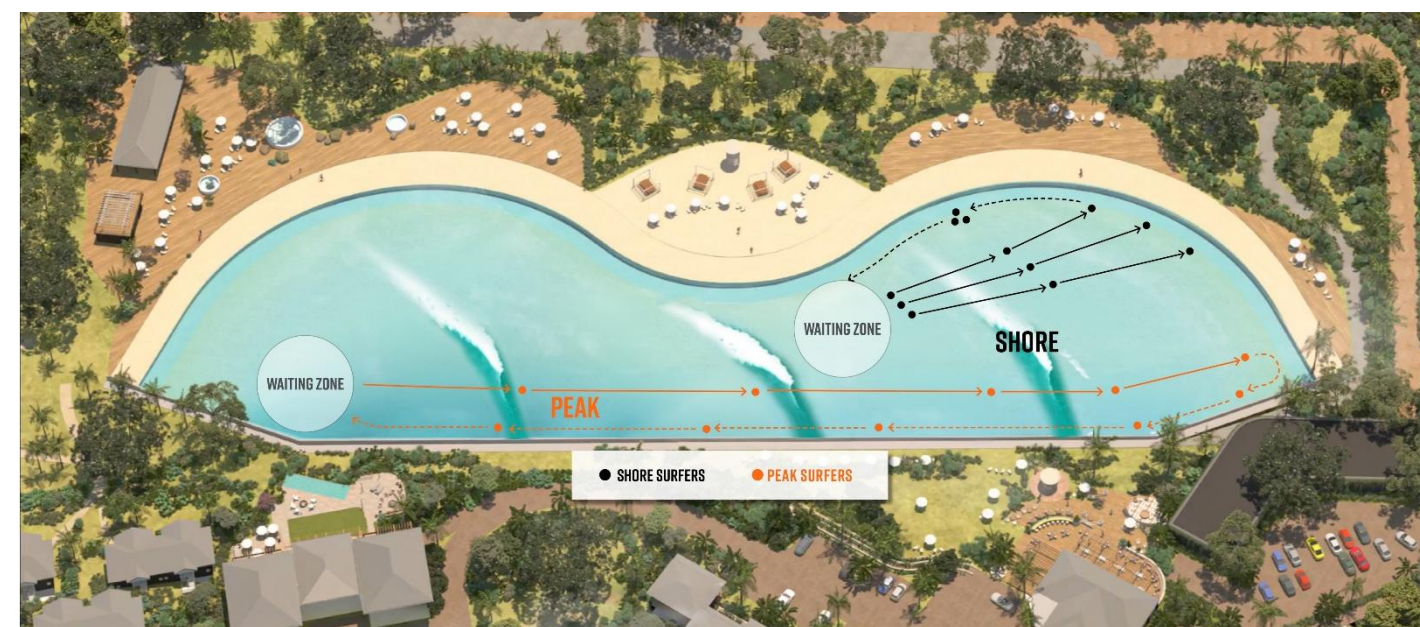
- Verdoppeln Sie die Kapazität zwischen vier simultanen Zonen
- Links und rechts mit einer authentischen Wartezone, um das Erlebnis zu teilen
- Gleichzeitig nutzbar zwischen The Peak und The Shore



PEAK: PREMIUM-SURFEN FÜR MAXIMALEN SPASS

- 18 Sekunden Fahrt auf ES34 in München (26 Sekunden auf ES48 und 33 Sekunden auf ES60)
- Vollständig anpassbar, um verschiedene Wellenhöhen und Abschnitte anzubieten
- Perfekt für ein Premium-Publikum, private Veranstaltungen, Wettbewerbe usw.

EINE ANPASSBARE POINT-BREAK-WELLE, DIE WAHRSCHEINLICH EINE DER LÄNGSTEN WELLEN SEIN WIRD, DIE VIELE IHRER GÄSTE JEMALS SURFEN WERDEN.



GEFEIERT IN MÜNCHEN, SKALIERT FÜR DIE WELT

SURF PARKS GEHEN GLOBAL DER HEISSESTE NEUE ENTWICKLUNGSTREND



100+ Surfparks
weltweit in
Entwicklung



50+ Projekte
seit 2021
angekündigt



Globales Wachstum
auf allen 6
Kontinenten



Surfpark-Markt
mit prognostiziertem
Volumen von über
3 Mrd. USD bis 2030



Bildnachweis: O2 SURFTOWN MUC

MARKTENTWICKLUNG

Von Nischenattraktionen zu Ankerpunkten in der Gemeinschaft

- **70 % der neuen Projekte** sind Teil größerer Resort-, Immobilien- oder Mixed-Use-Entwicklungen
- **Über 50 %** beinhalten Hotels oder Übernachtungsangebote
- Durchschnittliche Fläche: **4–16 Hektar**
- Surfen ist der Anker – steigert die Auslastung der Resorts und den Gästeumsatz um bis zu **30 %**

**SURFPARKS SIND LÄNGST KEINE
ATTRACTION MEHR – SIE SIND
ANKER DESTINATIONEN**



WER SURFT HEUTE?

- Die weltweite Surfteilnahme wird auf **30–50 Millionen Menschen** geschätzt
- Surfpark-Gäste sind im Durchschnitt zu **60 % Erst-Surfer**
- **70 % der Besucher** reisen über **150 KM+** – Surfparks treiben damit die Reiseentscheidung ans Ziel
- Das Publikum ist **breit gefächert**: Familien, Jugendliche, Fitness-Enthusiasten, Reisende und lebenslange Surfer
- Wenn ein Erst-Surfer **3-mal** surft, steigt die Wahrscheinlichkeit der Wiederkehr und Markenbindung deutlich



SURFEN WÄCHST – UND ÖFFNET NEUE TÜREN



Bildnachweis: O2 SURFTOWN MUC

DAS GESCHÄFTSMODELL VON SURFPARKS

Erlebnisorientiert, zukunftsfähig und wiederkehrend –
die Wirtschaft hinter der Welle.



Durchschnittlicher Umsatz pro Besuch:
75–150 € (Surfen, Gastronomie, Einzelhandel)



Jahresmitgliedschaften im Schnitt:
1.000–2.000 € pro Surfer



Zusammensetzung der Nebenerlöse:
Gastronomie (25 %), Einzelhandel (15 %),
Coaching (10 %)



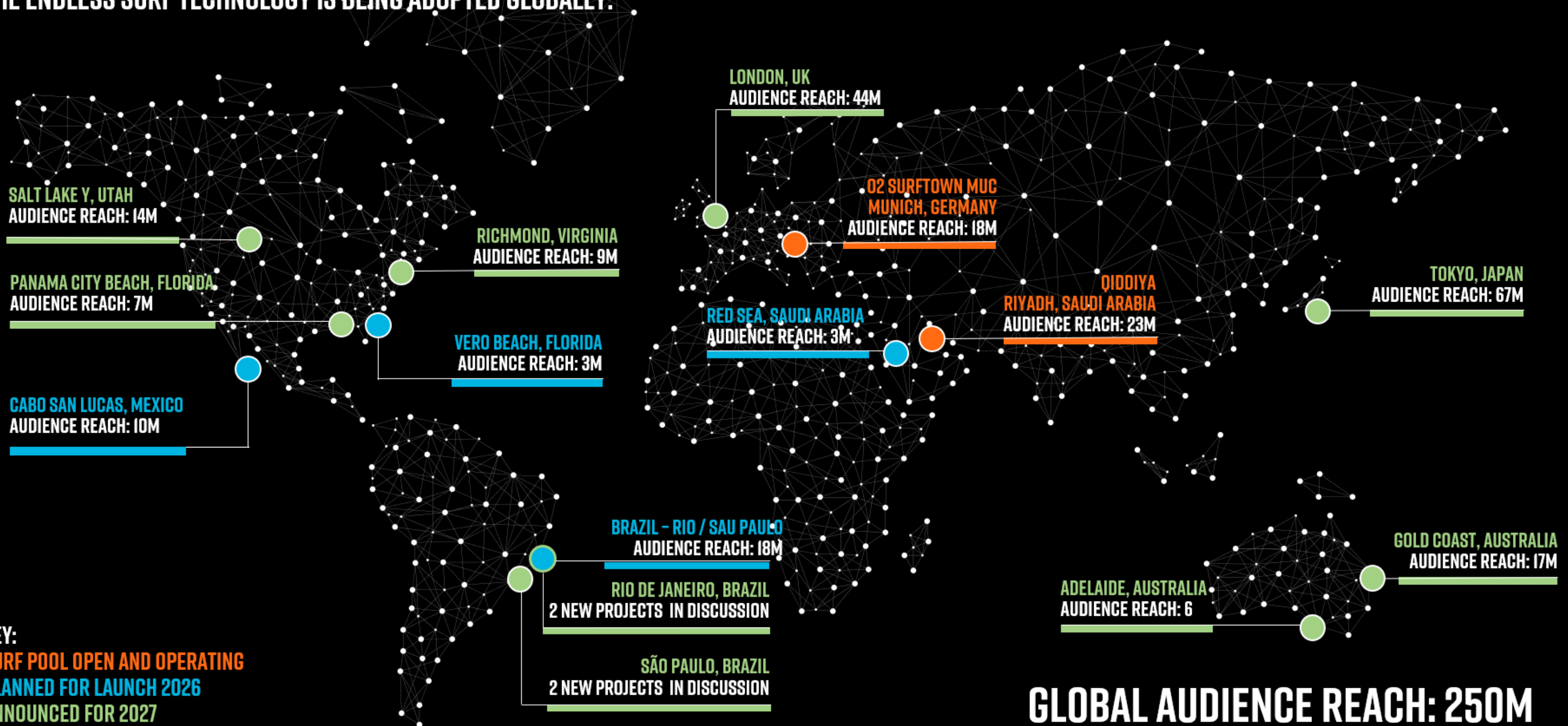
Preis pro Session: **80–250+ €** pro Stunde,
je nach Markt und Technologie



Hohe Kundenbindung dank natürlicher
Lernkurve und stetiger Fortschritte beim Surfen

PUTTING SURFING ON THE MAP, IN THE MOST INFLUENTIAL LOCATIONS

THE ENDLESS SURF TECHNOLOGY IS BEING ADOPTED GLOBALLY.



KEY:
SURF POOL OPEN AND OPERATING
PLANNED FOR LAUNCH 2026
ANNOUNCED FOR 2027

GLOBAL AUDIENCE REACH: 250M



WAS KOMMT ALS NÄCHSTES?

- Die Teilnahme an Surfparks wird sich **bis 2030 verdoppeln**.
- In den nächsten 3 Jahren werden in **über 10 neuen Ländern** die ersten Surfparks eröffnen.
- Endless Surf ist aktuell in **mehr als 30 Projekten weltweit** engagiert.

DIE NÄCHSTE WELLE DER SURF-KULTUR ENTSTEHT IN SURFPARKS – DENN SIE WERDEN ZU ARENEN FÜR SPORT, KULTUR UND INNOVATION.

O² Surftown MUC – Das Surfbecken

Stefan Allig - Andreas Dirlam



MYRTHA INNOVATIONEN MIT SYSTEM





SUBSIDIARY



1. MYRTHA POOLS USA INC.
2. MYRTHA POOLS SWITZERLAND S.A.
3. MYRTHA CONTRACTING USA INC
4. WELLNESS SPECIALIST S.R.L.
5. MYRTHA POOLS BRASIL
6. MYRTHA POOLS SOUTH EAST EUROPE DOO
7. MYRTHA POOLS INDIA PRIVATE LIMITED
8. MYRTHA POOLS MIDDLE EAST
9. MYRTHA UK
10. MYRTHA AUSTRALIA
11. MYRTHA POOLS TOKIO
12. MYRTHA POOLS PARIGI
13. MYRTHA POOLS VARSAVIA
14. MYRTHA SWITZERLAND
15. MYRTHA POLAND

2024. A SPECIAL YEAR





PARIS 2024

PARIS 2024

PARIS 2024



Fin de l'échauffement de

PARIS 2024

PARIS 2024

PARIS 2024

PARIS 2024

PARIS 2024

PARIS 2024

PARIS 2024

PARIS 2024

PARIS 2024

PARIS 2024

PARIS 2024

PARIS 2024

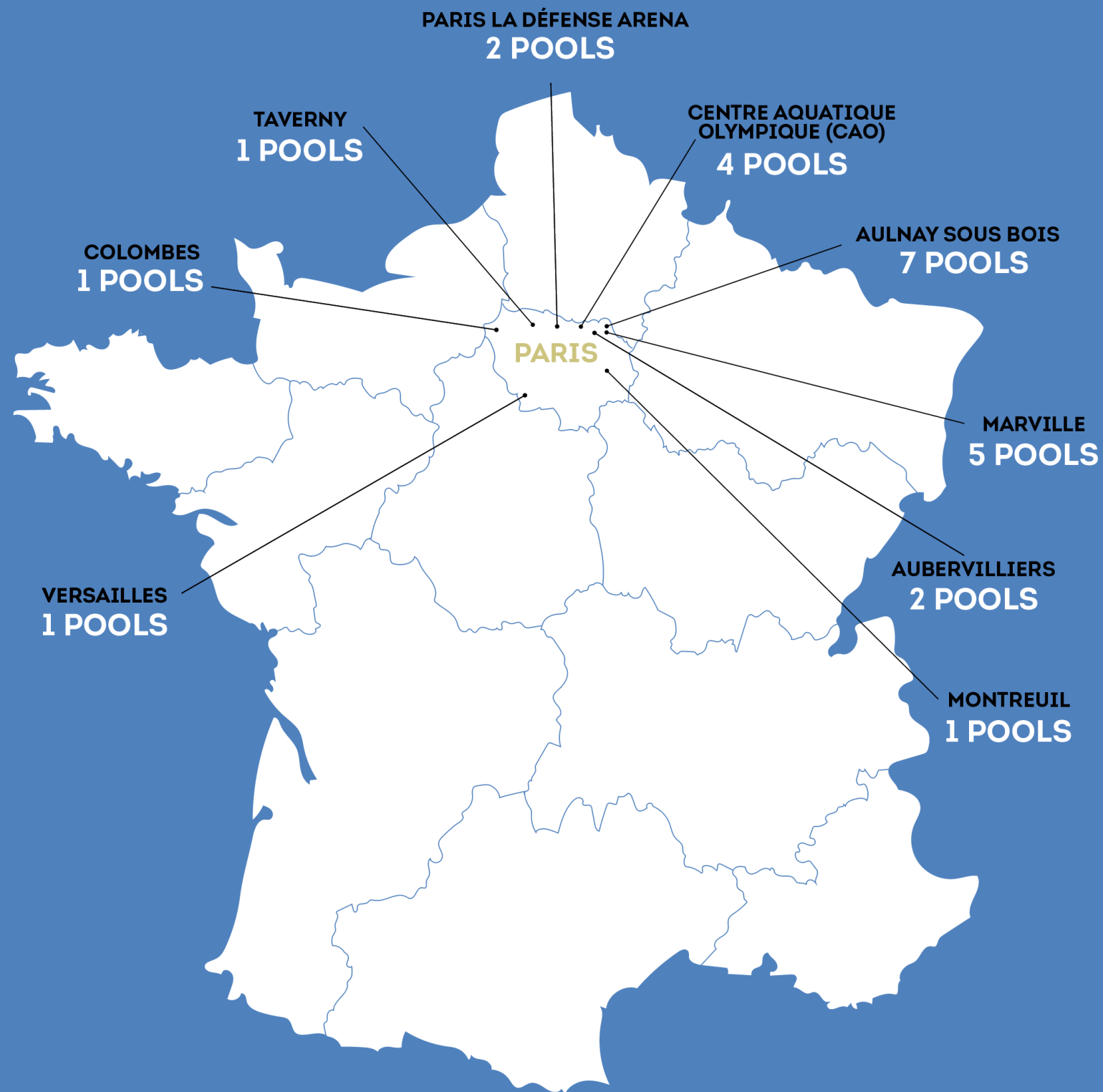
PARIS 2024

PARIS 2024

PARIS 2024

AQUATIC VENUES

MAP



20 PERMANENT POOLS IN THE GREAT METROPOLITAN PARIS AREA

3 LEGACY POOLS FOR PUBLIC CENTRES

SURF TOWN MUC - SURF SENSATION IN BAYERN. BECKEN MADE BY MYRTHA.



Das Projekt ist als Ergebnis aus der Zusammenarbeit zwischen dem Investor, Endless Surf und Myrtha entstanden und wurde in München - in unmittelbarer Nähe des Flughafens - errichtet und macht uns bei Myrtha besonders stolz.
Die Wellen werden mittels riesiger Wellenkammern mit ausgeklügelter Technik erzeugt und sind bis zu einer Höhe von ca. 3 m frei modulierbar. Das gesamte Becken und dessen Oberflächen wurden dank unserer Erfahrungen im Großbeckenbau mit unseren Systemen ausgestattet. Langlebigkeit und Beständigkeit bei diesen gigantischen dynamischen Kräften sind dank intensiver Simulation und technischem Knowhow garantiert.

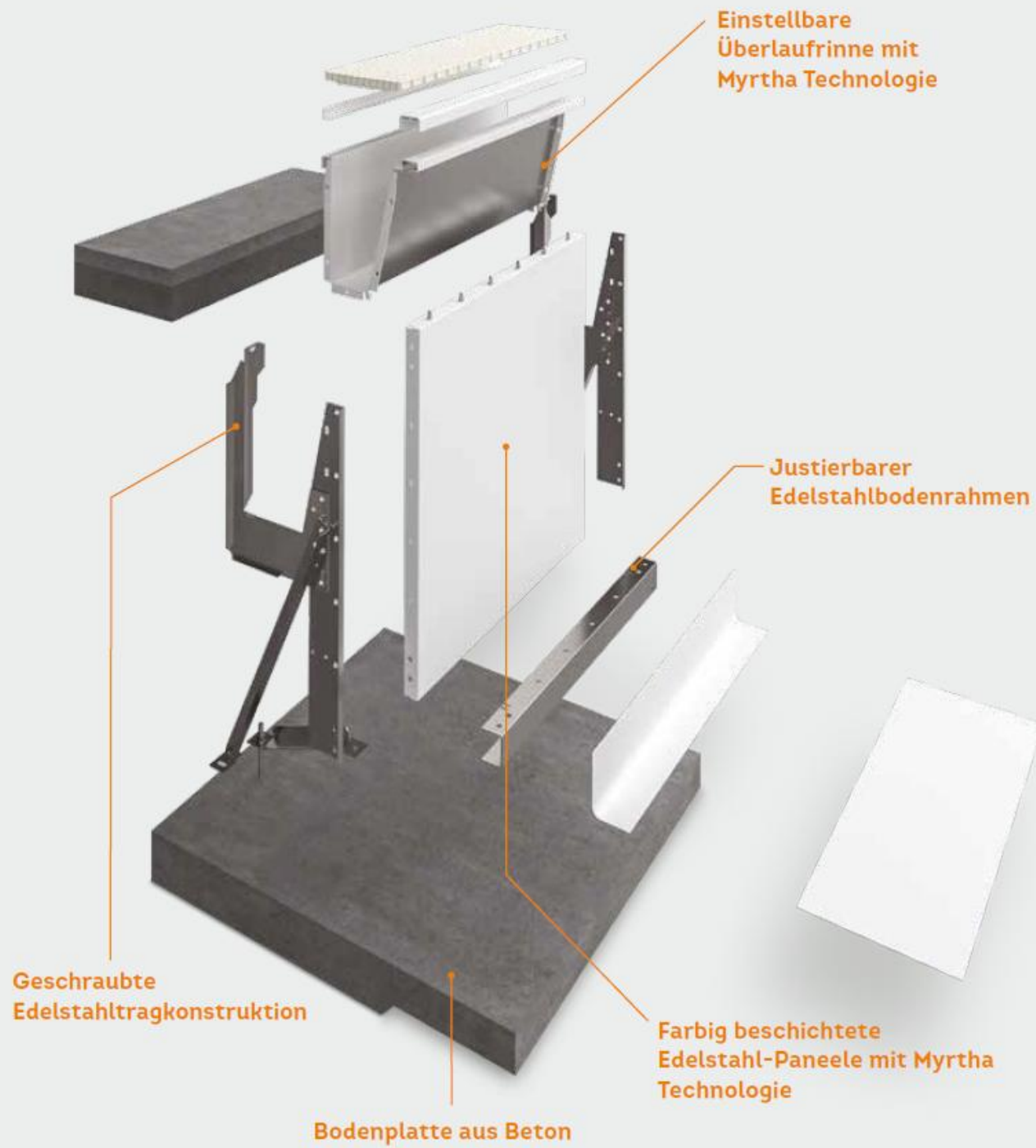
O2 Surftown MUC - Hallbergmoos bei München / Deutschland - Maisch Wolf Architects



Myrtha – Auch Daily Business



DIE MYRTHA TECHNOLOGIE
DIE SYSTEMKOMPONENTEN IM EINZELNEN

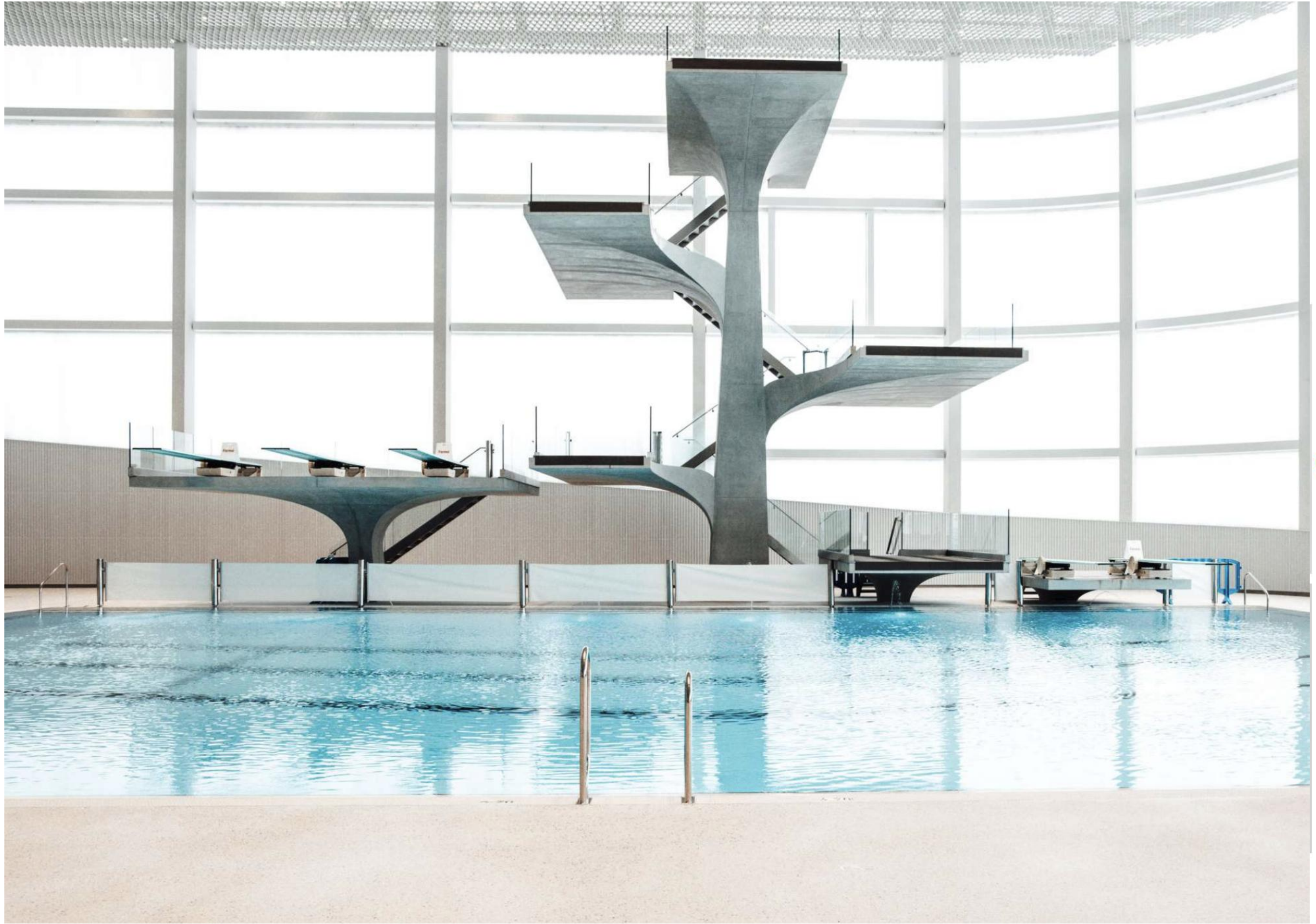


EINE ÜBERLAUFRINNE - UNENDLICH VIELE MÖGLICHKEITEN.

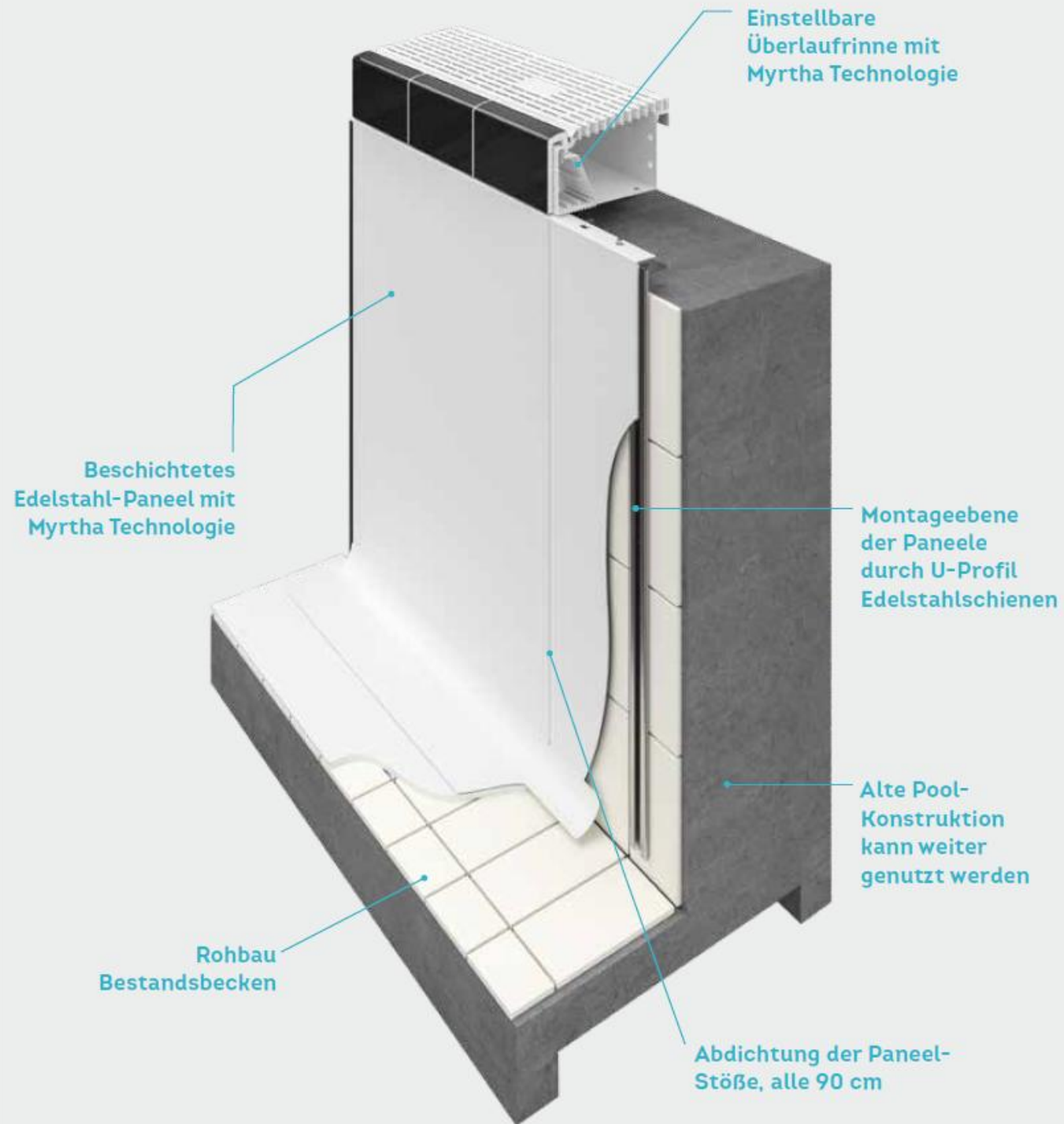
WIE SOLL IHR DESIGN AUSSEHEN?



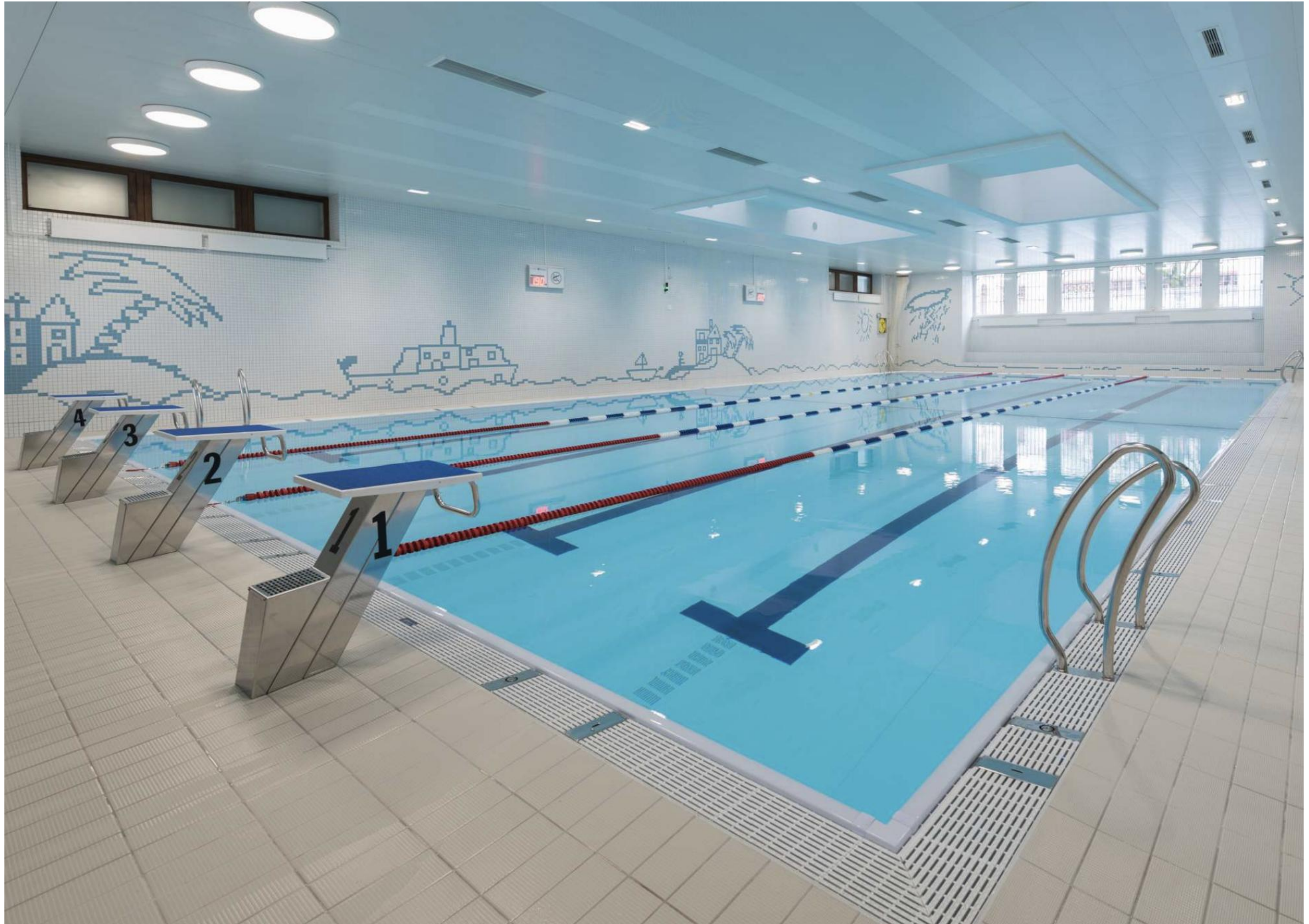




MYRTHA RENOVATION TECHNOLOGIE EIN RESSOURCENSCHONENDES SYSTEM FÜR PRAKTIKER



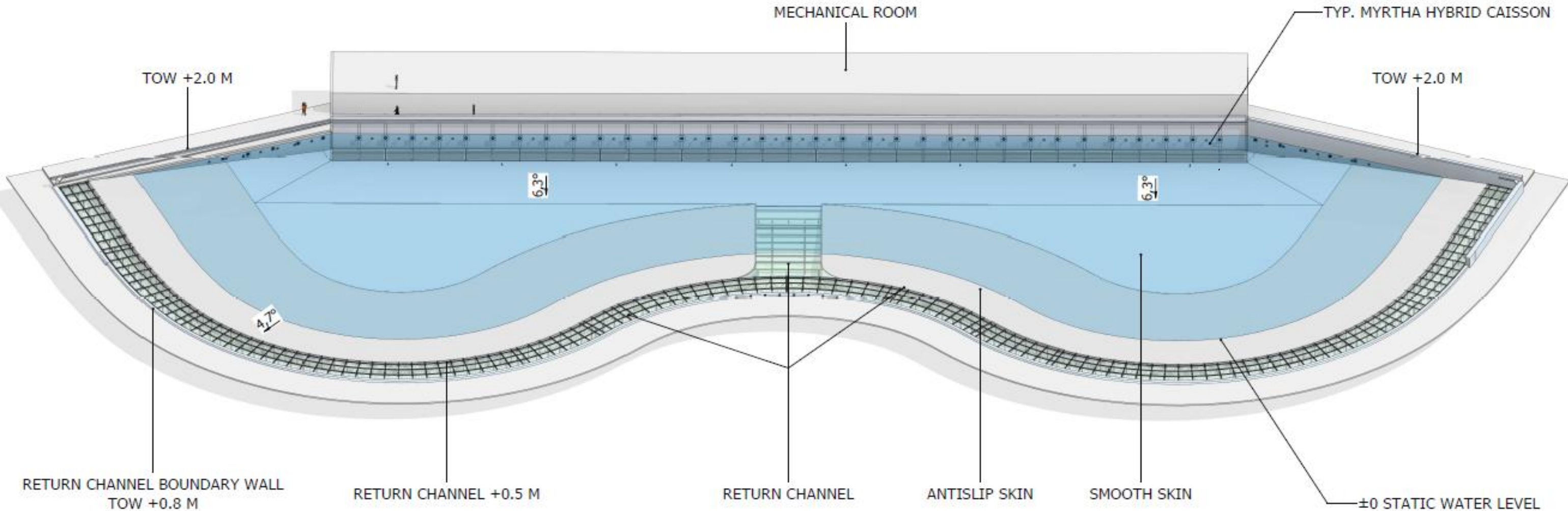




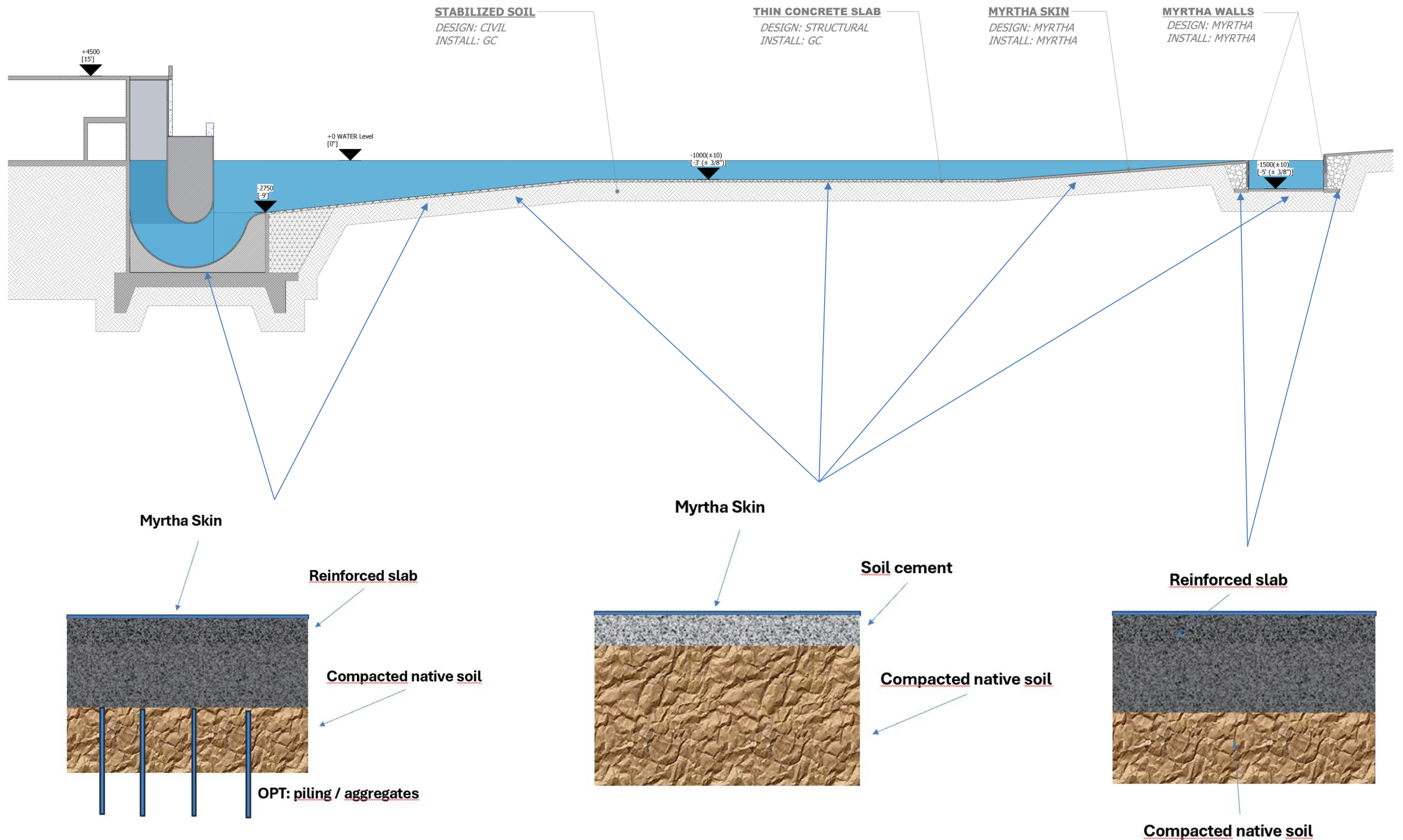
Surftown – Beckendesign und Konstruktion



ENDLESS SURF LAGOON



BASIN DESIGN (for reference only – real soil conditions must be taken in consideration)

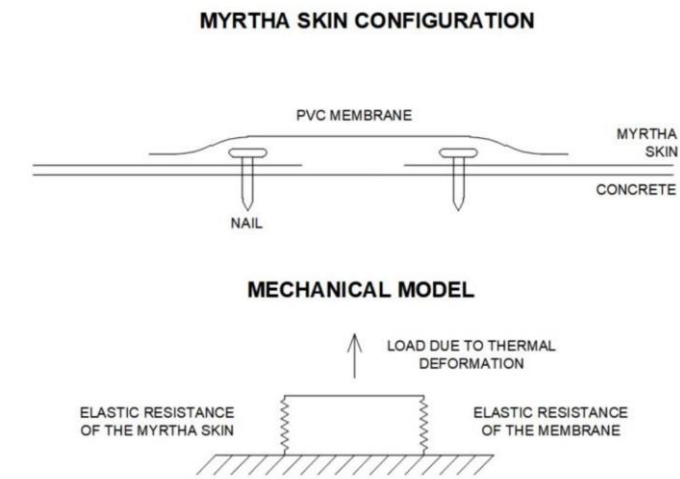
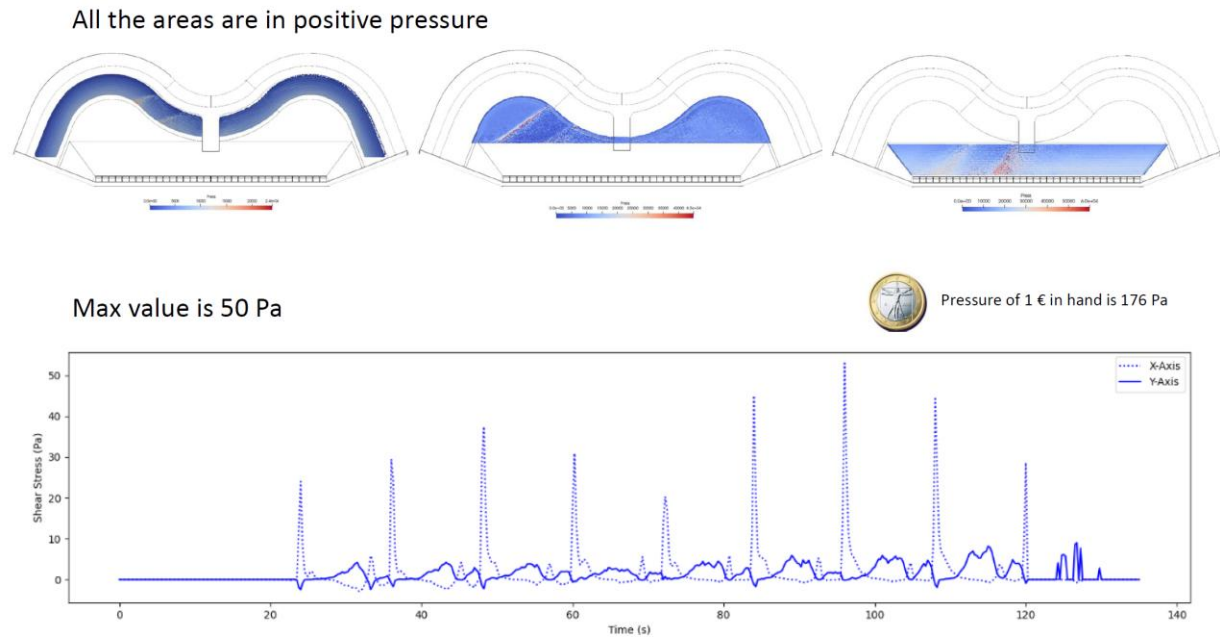


The floor strategy is defined by the client's engineer based on geotech analysis and structural strategies.



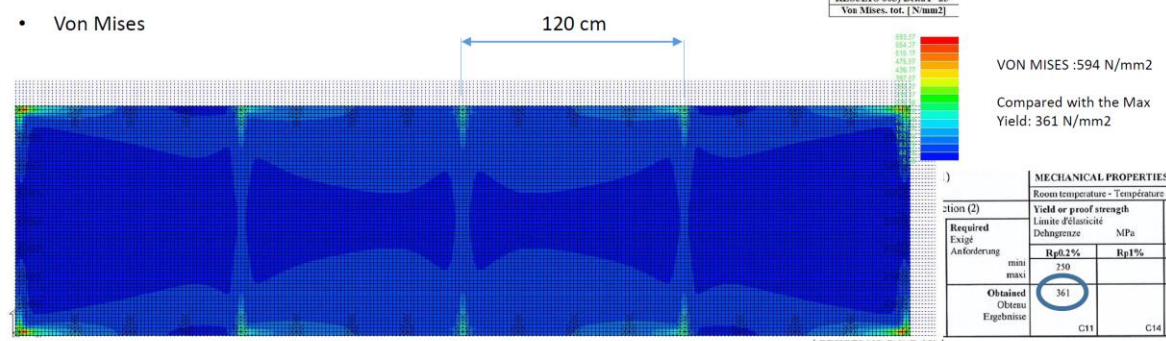
MYRTHA SKIN - FEM ANALYSIS

Specific FEM analysis have been carried out to detect the stress on the material and on the fixation elements, in relation to Temperature changes (DT = +/- 25°) and microcracks in the concrete below.

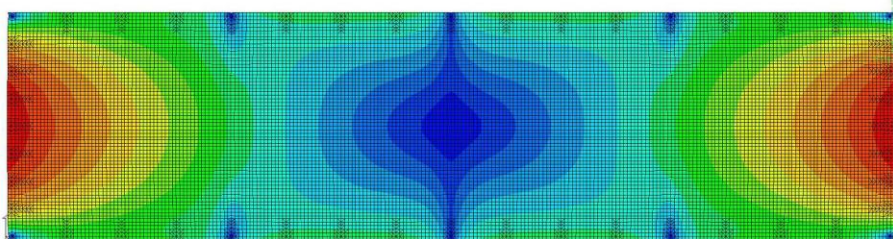


FEM Analysis : simulation of 4.8 m (fastening every 120 cm)

- Von Mises

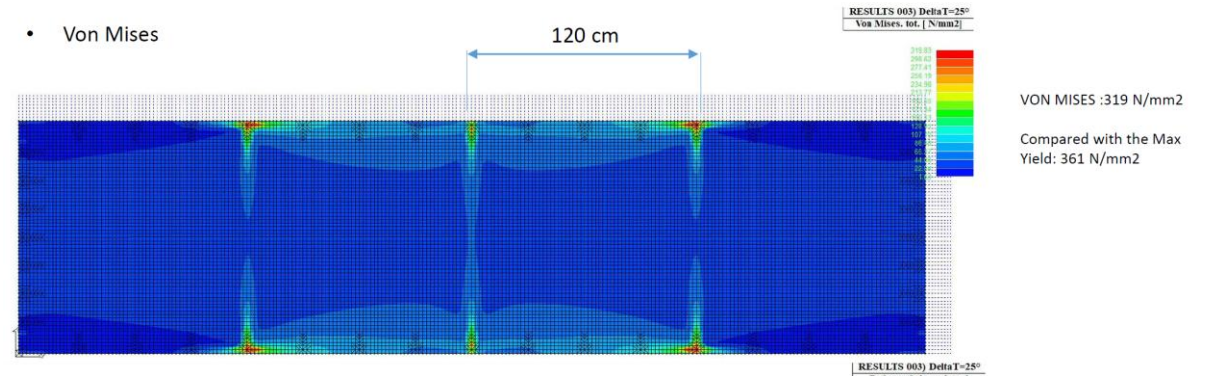


- Deformation

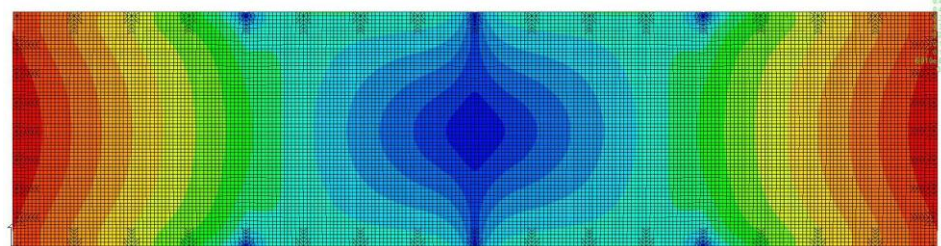


FEM Analysis : simulation of half of 4.8 m (fastening every 120 cm – FREE HEAD)

- Von Mises

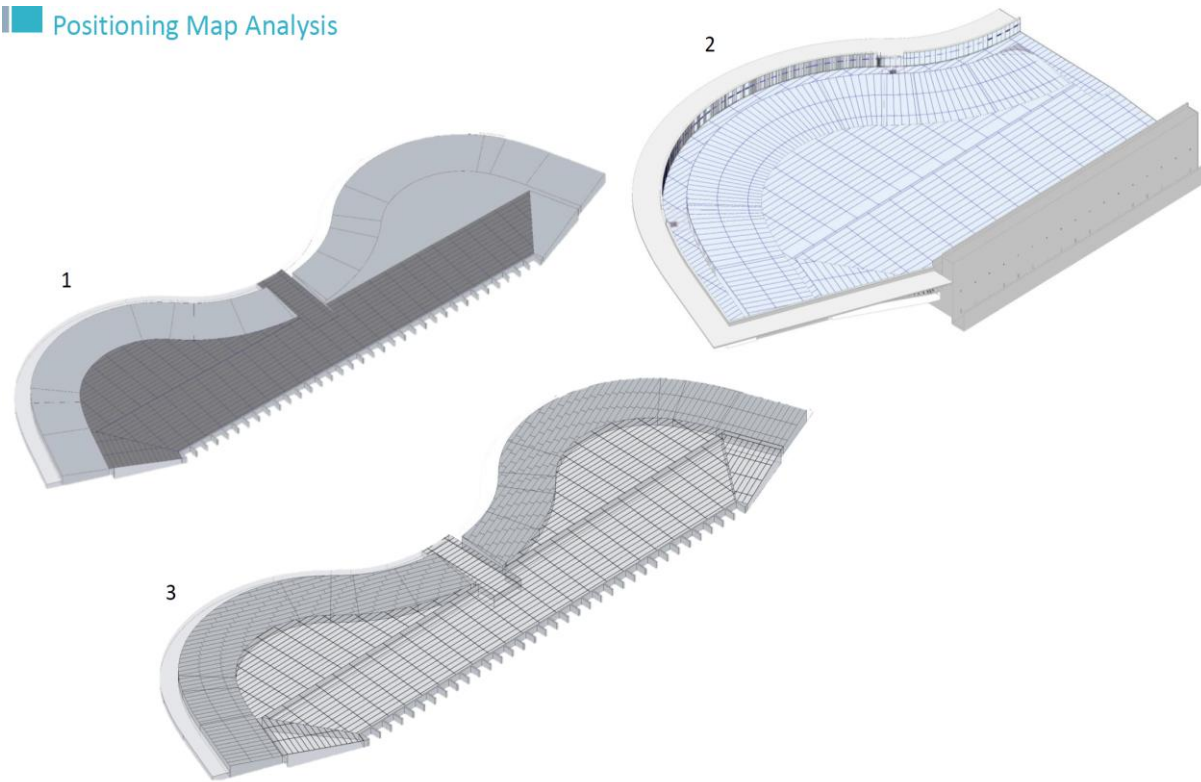


- Deformation



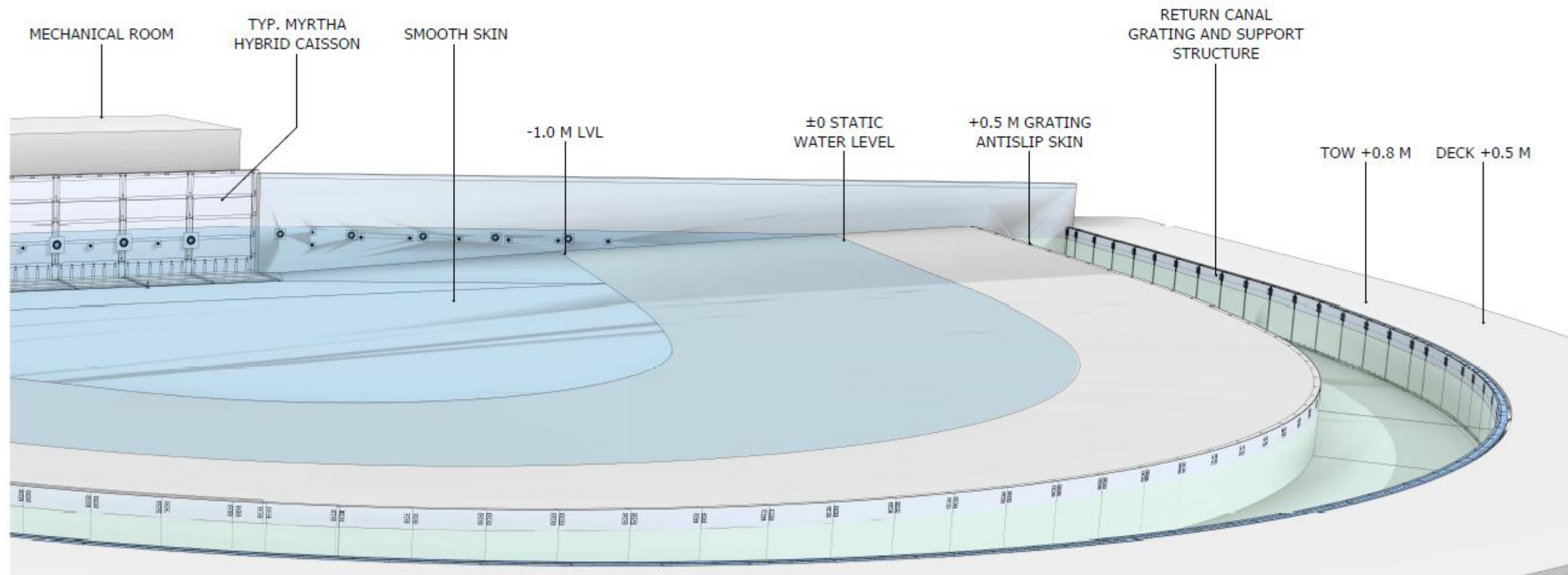
BASIN FLOOR DESIGN – Myrtha Skin smooth/antislip layout

Positioning Map Analysis

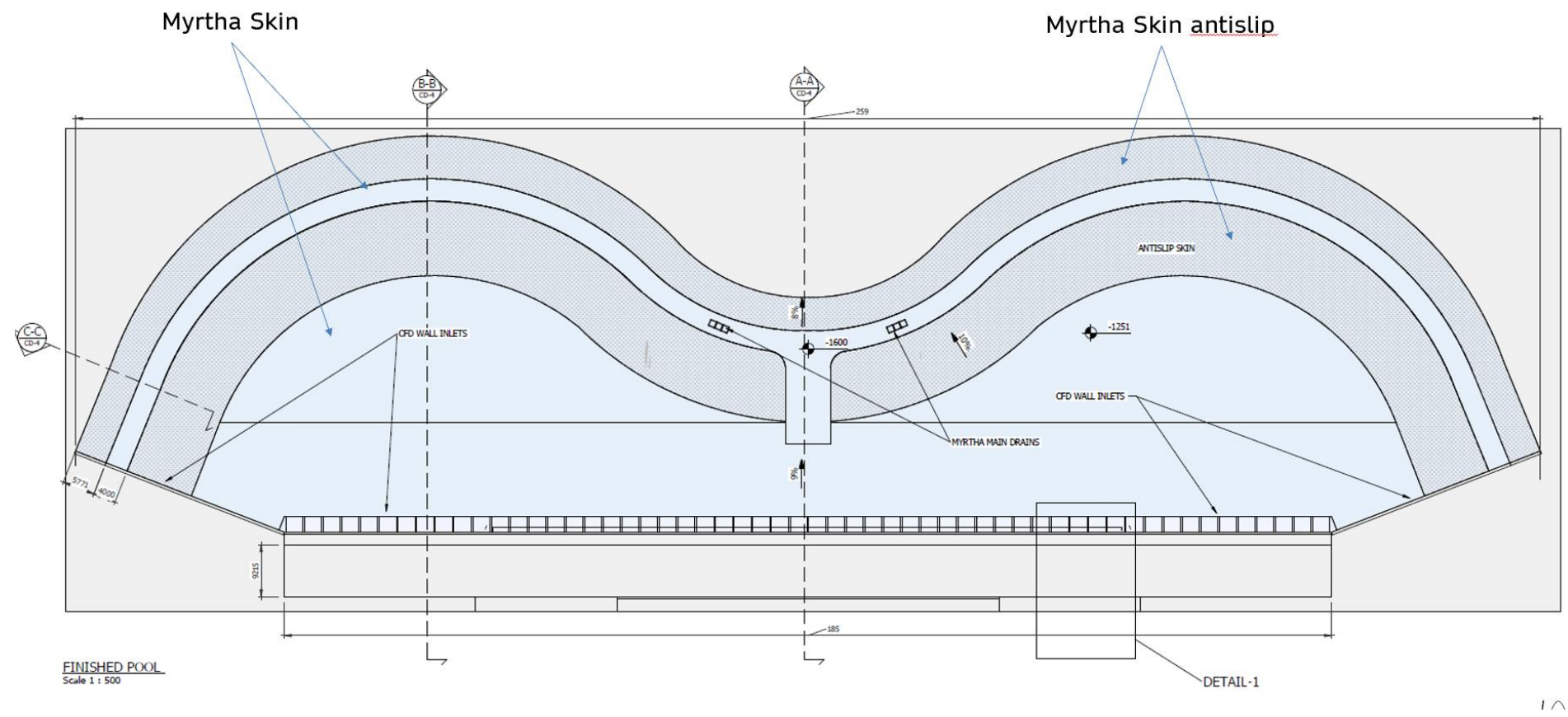


Myrtha skin positioning is designed to maximize the performances, duration and to easy installation.

In shallow water area, a special antislip treatment is executed on the Myrtha skin to guarantee surfers stability when walking.

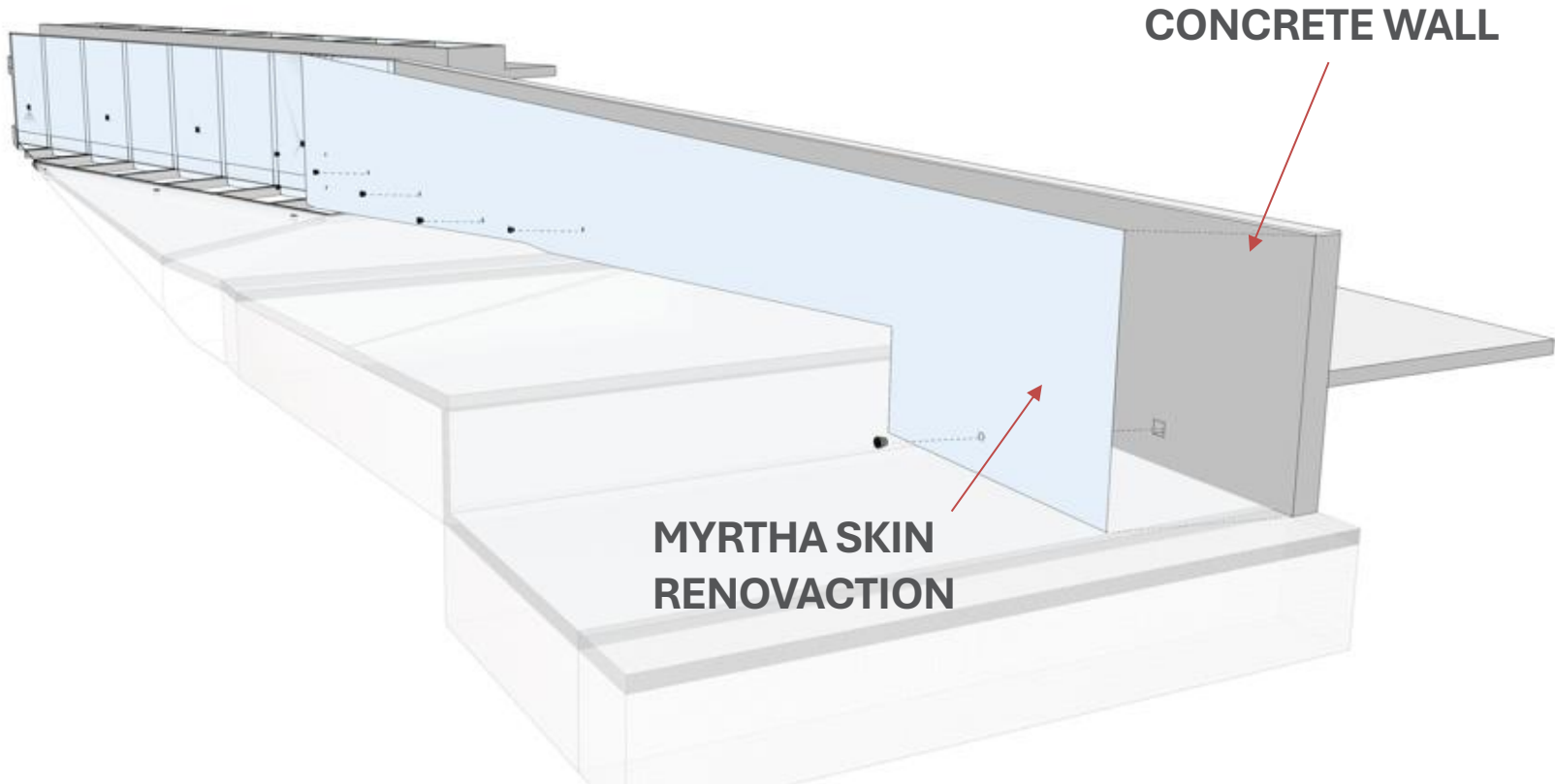


BASIN FLOOR DESIGN - MYRTHA SKIN



WING WALLS – MYRTHA SKIN WATERPROOFING -

Walls will be made in reinforced concrete.
Myrtha Skin will be mechanically fastened to guarantee waterproofing and to preserve the concrete over time.



MYRTHA SKIN

MYRTHA SKIN

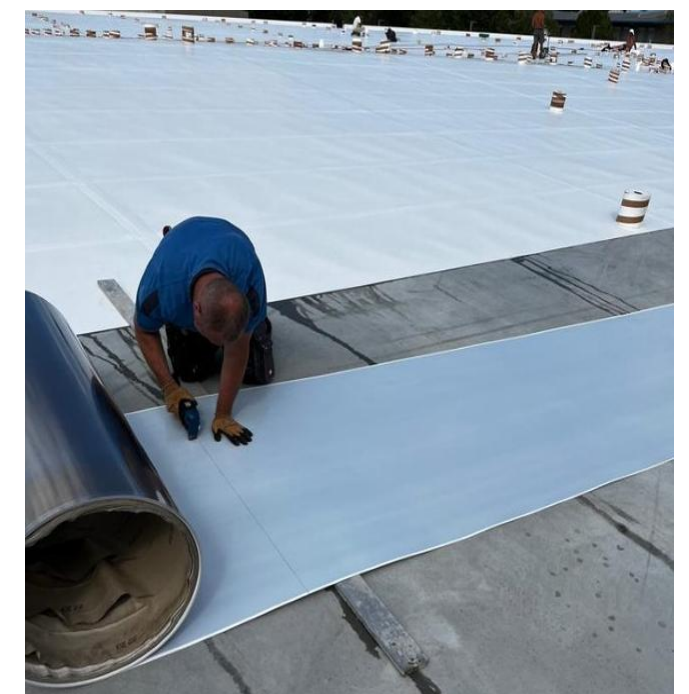
Myrtha Skin Technology is an **engineered liner** made of the same hard PVC laminated stainless steel as Myrtha panels, only in a coil format. Membrane strips are included to seal joints between coils.

Myrtha Skin has strong mechanical performances but is flexible and suitable to be installed in horizontal, vertical or curved surfaces.

It's designed and manufactured to guarantee high performances in heavy duty conditions.

SPECIFICATIONS

Material:	AISI 441 1.4509
Sheet Thickness:	1 mm (0.5 mm AISI 441 LI stainless steel + 0.5 mm Myrtha PVC)
Coil Height:	1 or 1.25 m
Coil Length:	up to 25 m
Weight:	120 kg for a 25 x 1 m coil
Min. Tensile Strength:	413 MPa
Dead Load:	50N/m



ANTISLIP FINISHING

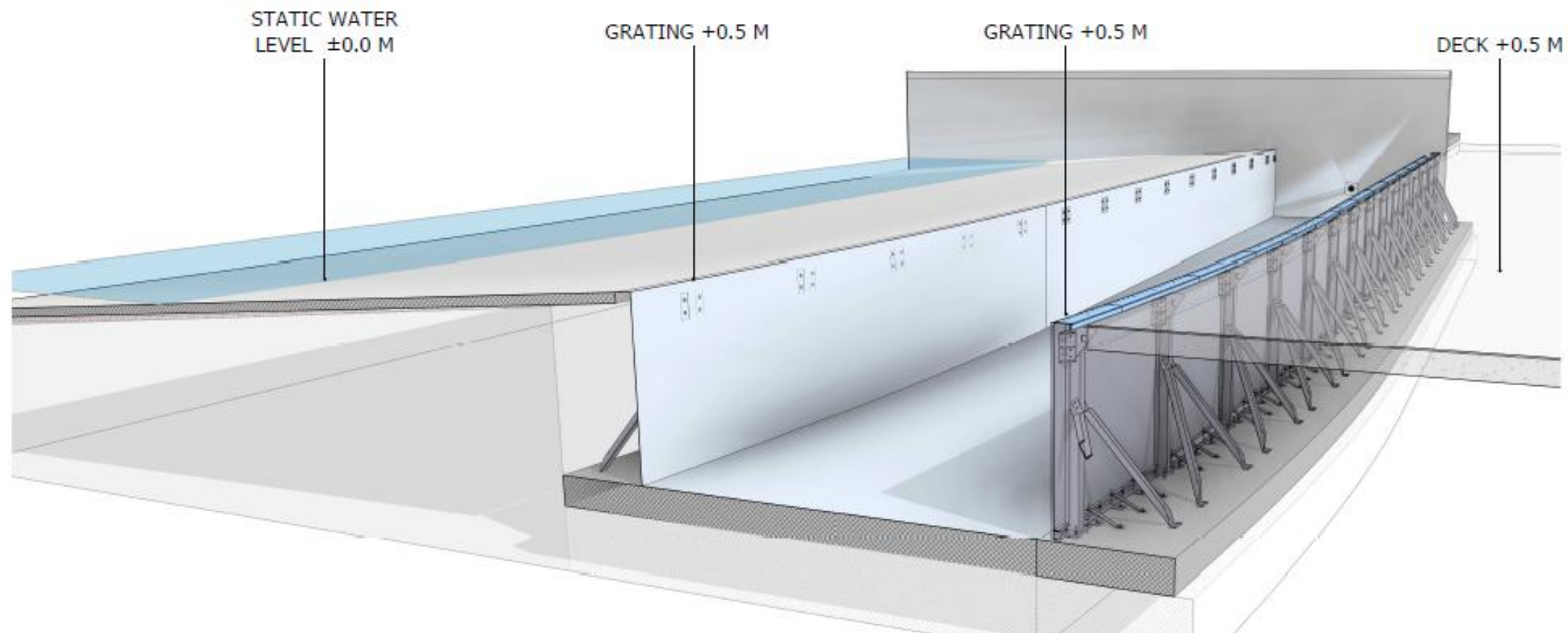
In the shallow water areas an anti-slip treatment can be executed. The process consist of liquid PVC sprayed with special tools directly on the Myrtha Skin surfaces, guaranteeing a long lastic adherence and performance.



Surftown – Rücklaufkanal



RETURN CHANNEL - MYRTHA FREESTANDING -



MYRTHA FREESTANDING MODULAR PANELS

MYRTHA PANELS

Myrtha modular panels are manufactured utilizing stainless steel AISI 441 LI laminated with hard PVC-P and the total thickness is **2.5mm** (2 mm stainless steel + 0.5 mm PVC-P).

MYRTHA BRACKETS

The vertical brackets are the backbone of the Myrtha pools' structure. The panels connect on the brackets and they serve as support for the upper frame.

They are manufactured utilizing stainless steel AISI 441 LI and the thickness ranges from 2mm to 5mm depending on structural requirements and calculations.

MYRTHA BUTTRESSES

Both sturdy and elastic they offer the perfect match for areas with difficult geologic conditions.

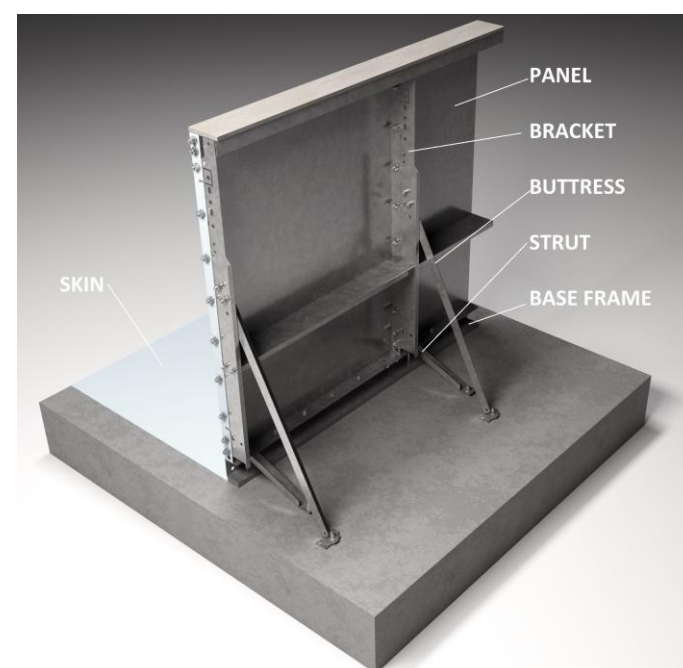
They offer support at each panel joint and are anchored to the concrete slab with threaded rods.

They are manufactured utilizing stainless steel AISI 441 LI and the thickness ranges from 2mm to 5mm depending on structural calculations.

MYRTHA STRUTS

The struts help the overall stability of the Myrtha structure reacting to the forces at the base of the wall and are anchored to the concrete slab with threaded rods.

They are manufactured utilizing stainless steel AISI 441 LI and the thickness is 3mm.



MYRTHA BASEFRAME

A base frame of bolted steel sections creates the structure to support the wall panels.

Strong chemical anchors connect the base frame to the concrete slab.

The threaded bars anchored to the perimeter provide rigidity and millimetric levelling ability.

They are manufactured utilizing stainless steel AISI 441 LI and the thickness is 2mm.



STRUCTURAL DESIGN REQUIREMENTS

Myrtha panels, struts and buttresses are anchored to a concrete perimeter footer using chemical anchors. The perimeter footer structural design is site specific and contingent on a geotechnical analysis. The minimum footer size required for these anchors will be defined by Myrtha. The final footer size will be determined by the structural engineer based on data from the geotechnical report.

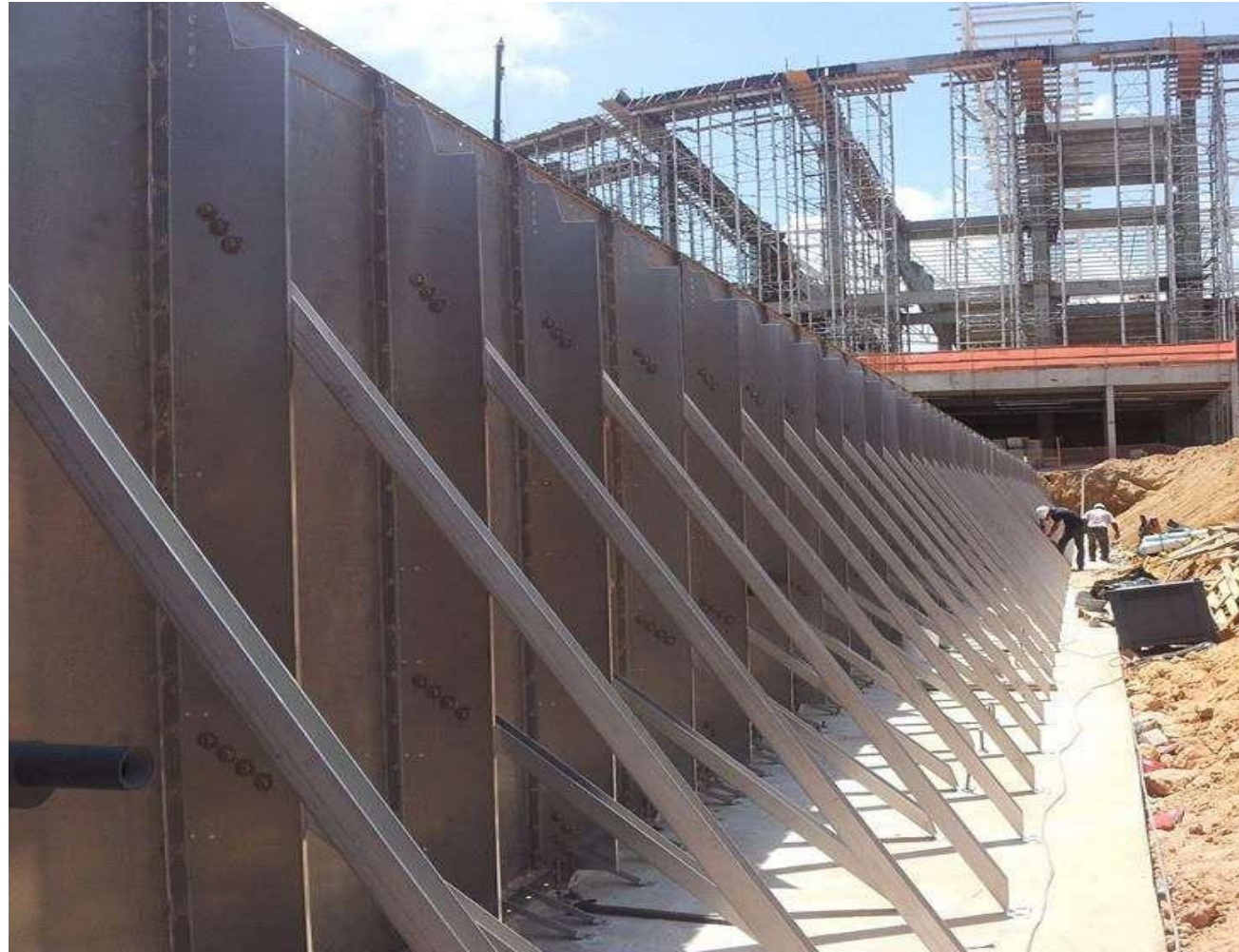
CONSTRUCTION TOLERANCE

Perimeter footer: ± 20 mm

Surftown – Beckenmontage



MYRTHA FREESTANDING MODULAR PANELS



Examples of Myrtha walls

MYRTHA SKIN

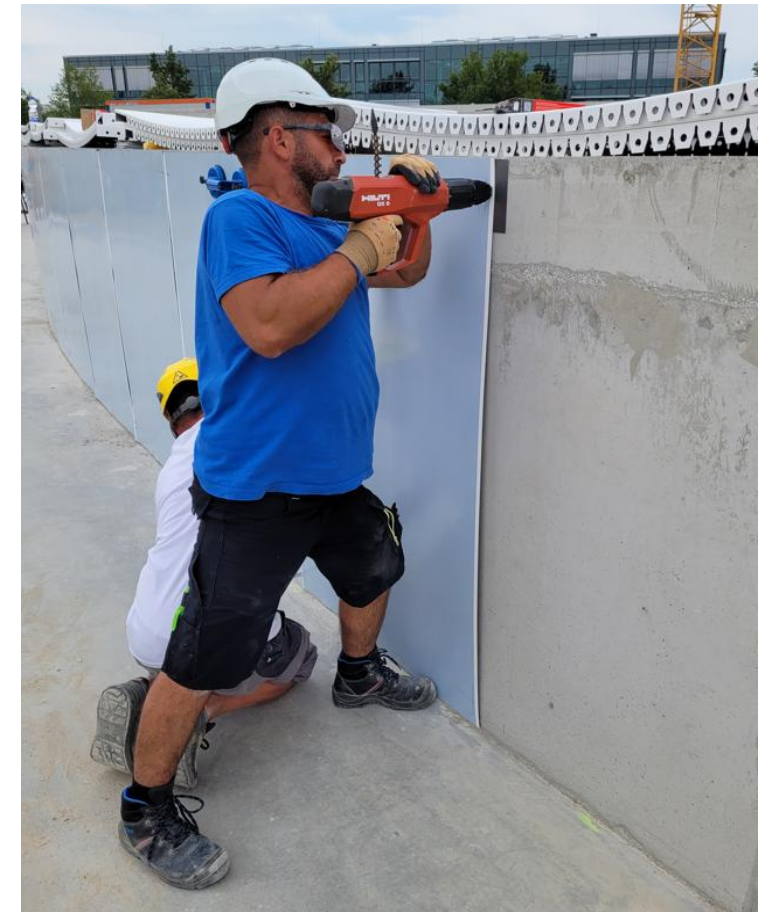
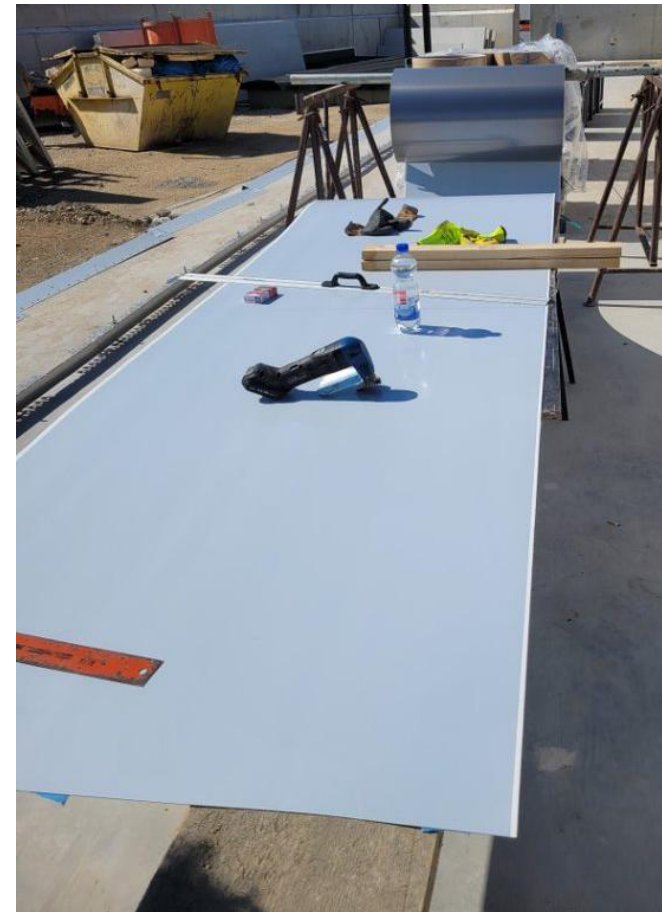
INSTALLATION PHASES

Coils are delivered to site on wooden pallet (1.2 x 1.2 m / 4 coils), potentially with specific lengths according to the designed pattern.

Coils are unrolled and when needed shaped on site with electric scissors.

The connection to the surface depends project by project (nails, rivets, screws, glue may be used)

Each Myrtha Skin piece is then jointed to the others with PVC stripes with cold welding process, guaranteeing a continuous PVC layer.



MYRTHA SKIN

MYRTHA SKIN SEALING

Reinforced membrane strip is hot welded on the coils' junction to secure the waterproofing while guaranteeing flexibility. The process is made via an automated welding tool with pre selected pattern specific parameters .



WATERPROOFING TESTS



The waterproofing test is carried out with two techniques (executed in parallel):

1. Vacuum test
2. Spark test

Vacuum Test:

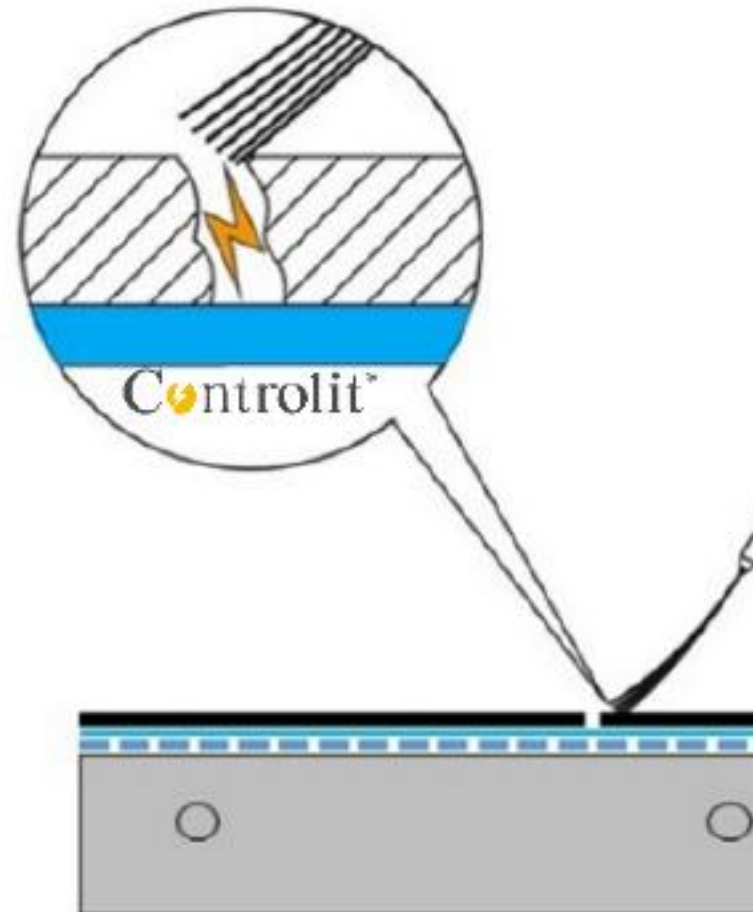
A sampling of 2500 ca points (Tech dept creates the testing sample pattern based on the project) on the PVC stripes welding is carried out.

In case of leak detection, a correct welding is made and another test is carried afterwards to guarantee the operation.

Spark Test:

The floor is scanned with a special tool to detect potential micro perforations.

In case of detection, a corrective action is made to restore the right performance and another test is carried afterwards to guarantee the operation.



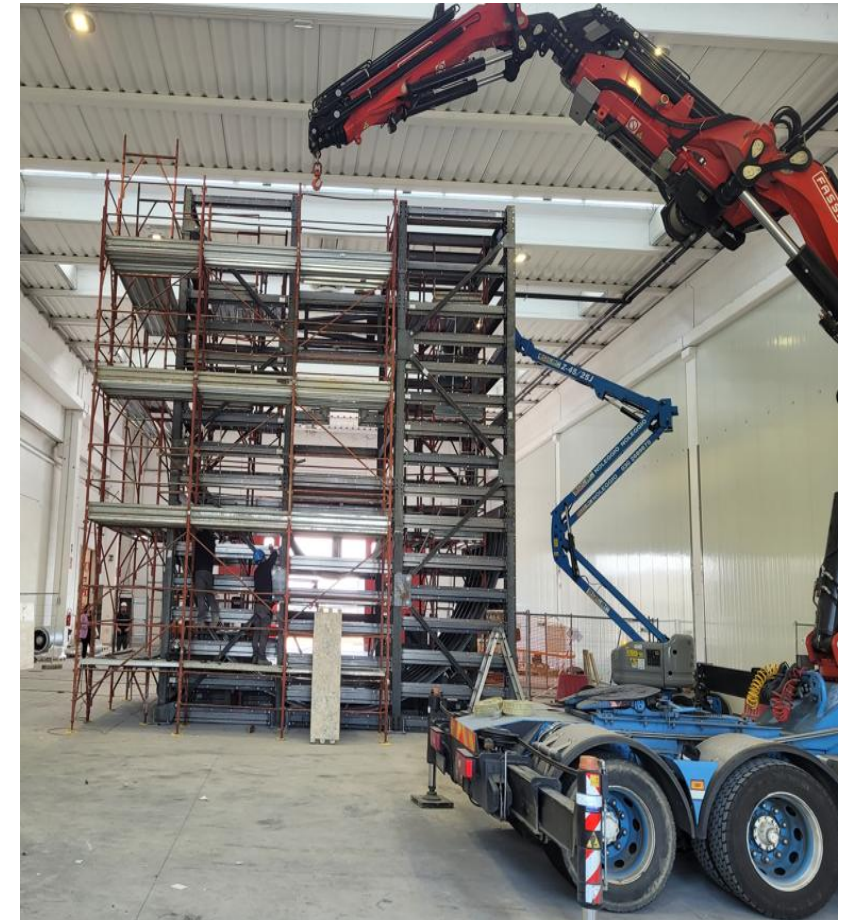
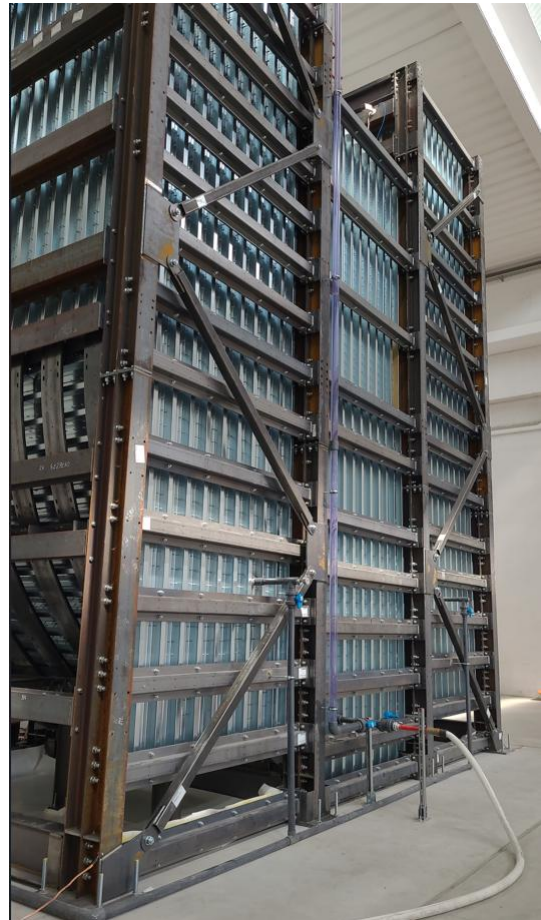
Surftown – Wellenkammer Auskleidung



WAVE GENERATOR – MOCK UP

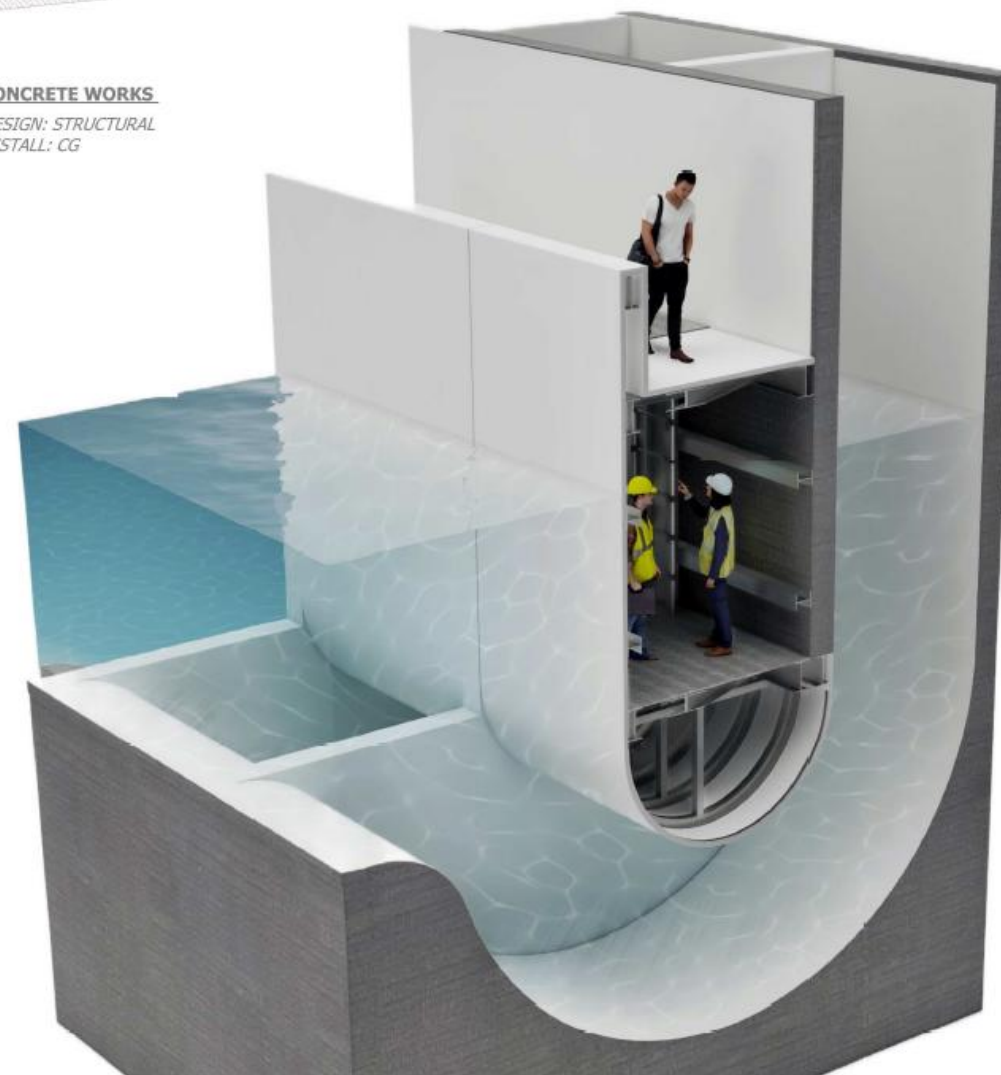
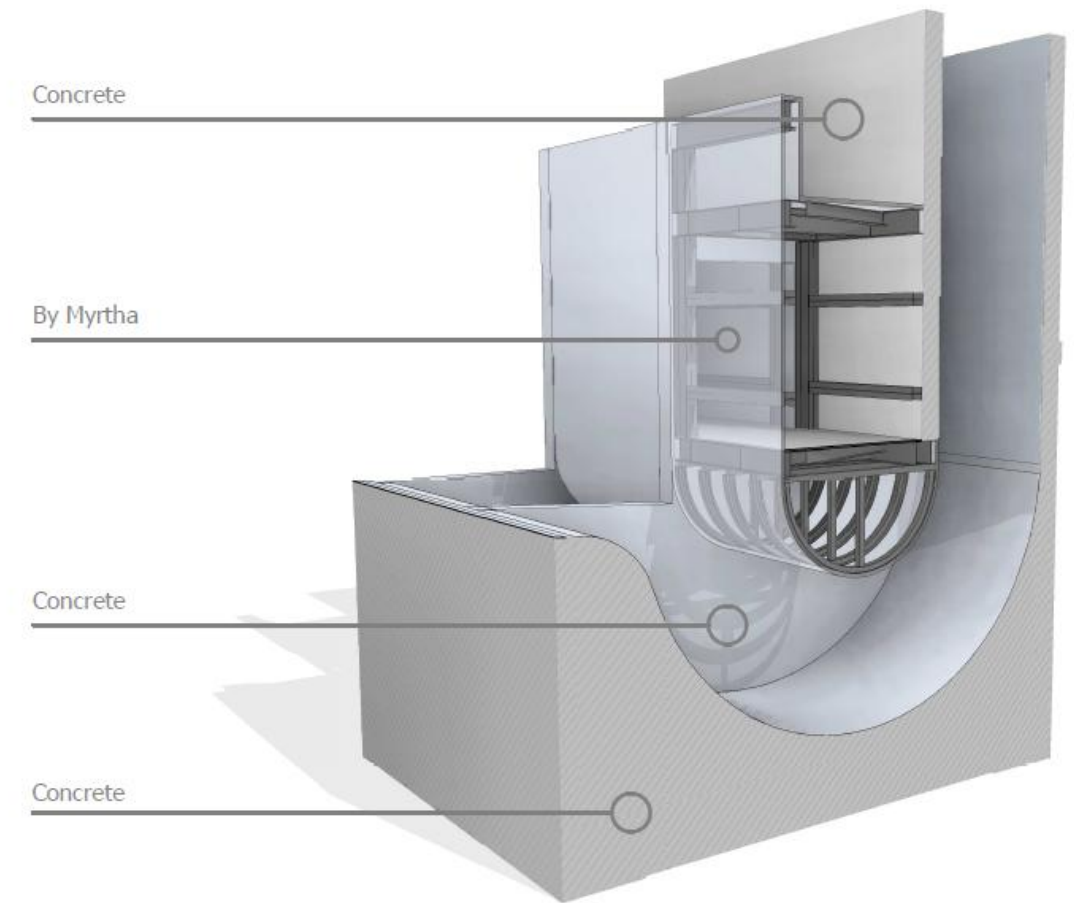
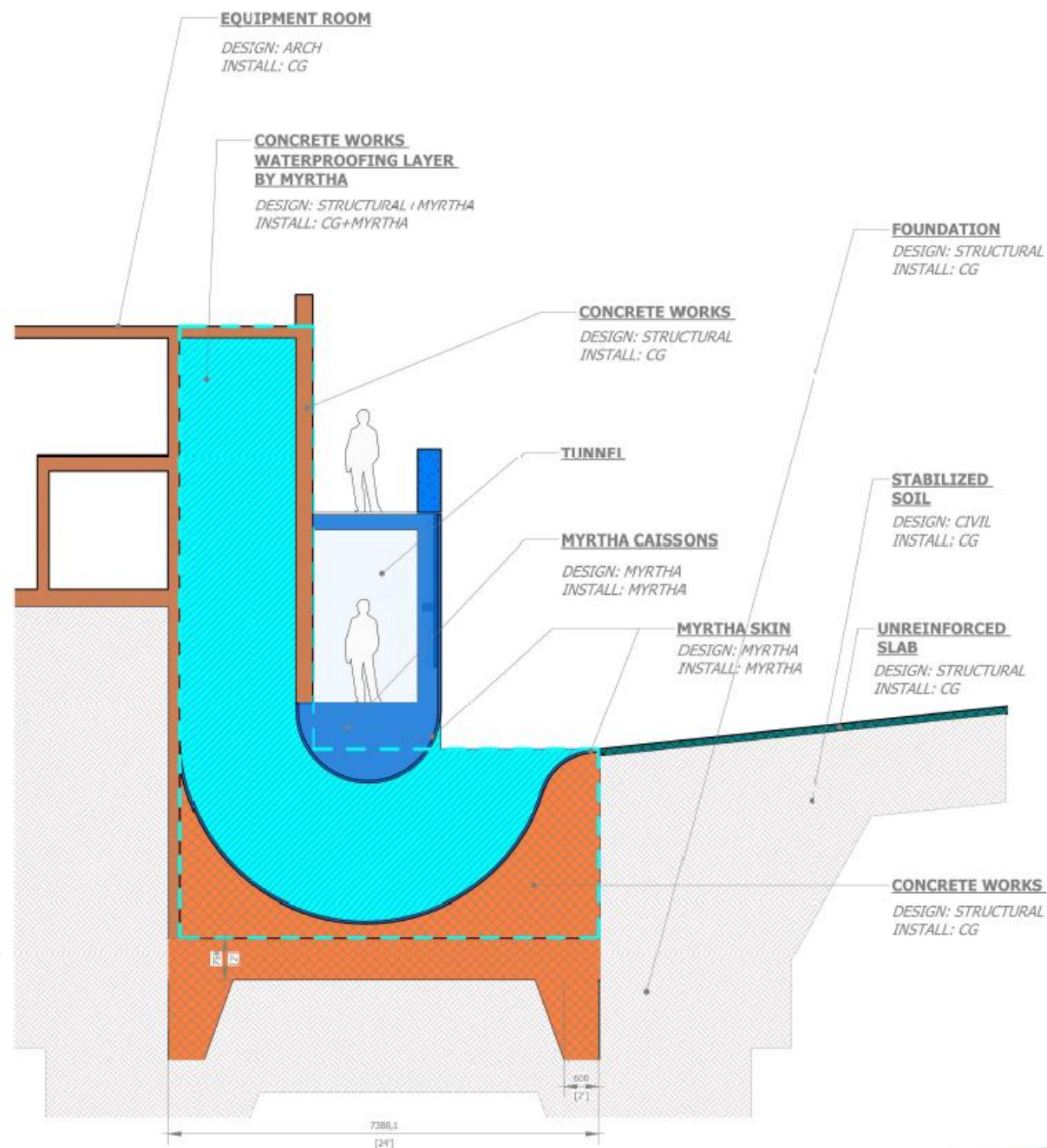
A full scale wave generator “mock up” with displacement chamber has been built back end of 2022 to carry extensive tests. The WG was filled with 60 m³ of water.

Dynamic load tests, pressure tests, fatigue tests are being executed to collect useful data to fine tune the design, valves, fans and the wave generation software system.



CAISSON – MYRTHA FABRICATION VERSION

Myrtha Fabrication

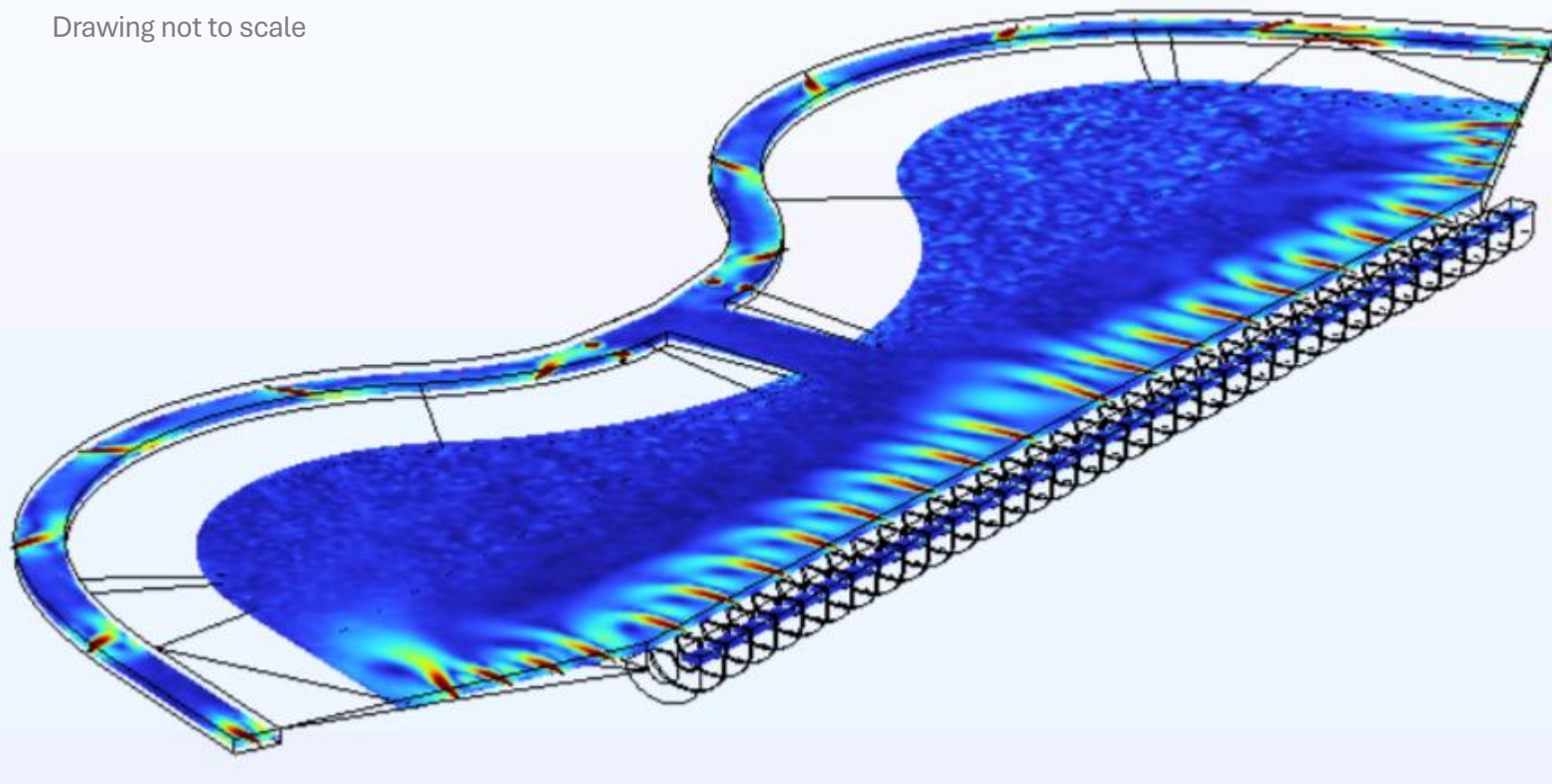


Surftown – Wasserzirkulation



WATER CIRCULATION - CFD ANALYSIS – Wave System is not operating

Drawing not to scale



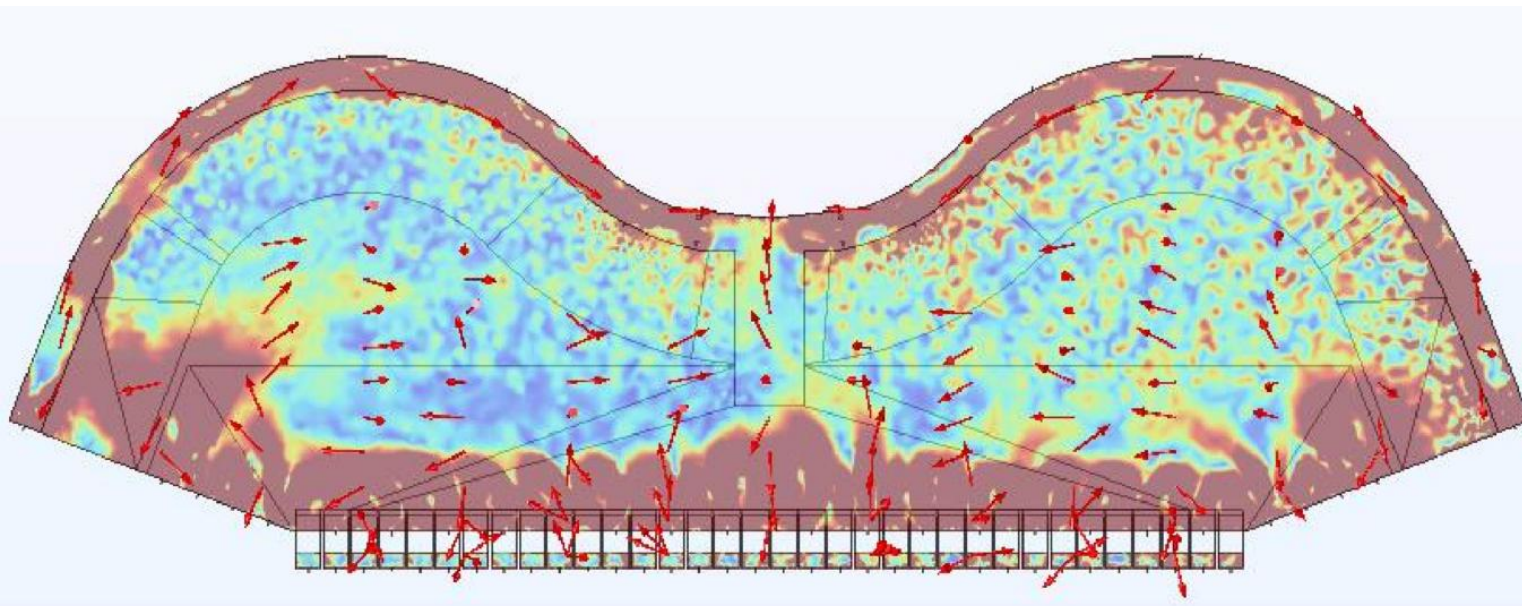
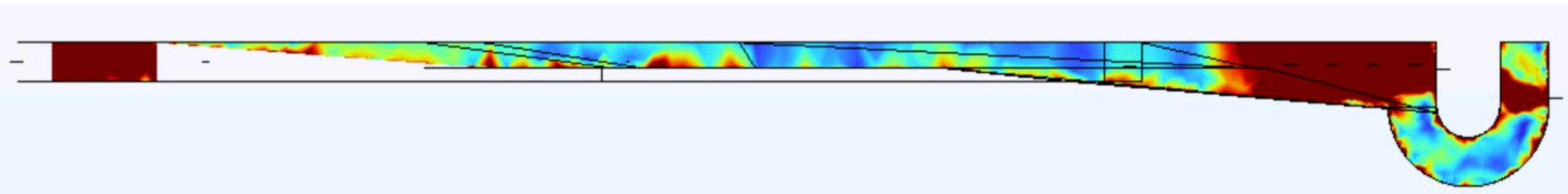
MYRTHA CFD TECHNOLOGY

Analytical solution of fluid dynamic equations is possible only for very simple cases. Otherwise the CFD (Computational Fluid Dynamics) becomes essential. CFD is nowadays well known and used in a very large number of applications. The numerical solution of fluid dynamic equations has characteristics that require close attention to be paid in order to reach a physical solution. The knowhow of Myrtha Pools guarantees a physical approach to CFD simulations even for complex 3D simulations of an entire pool.

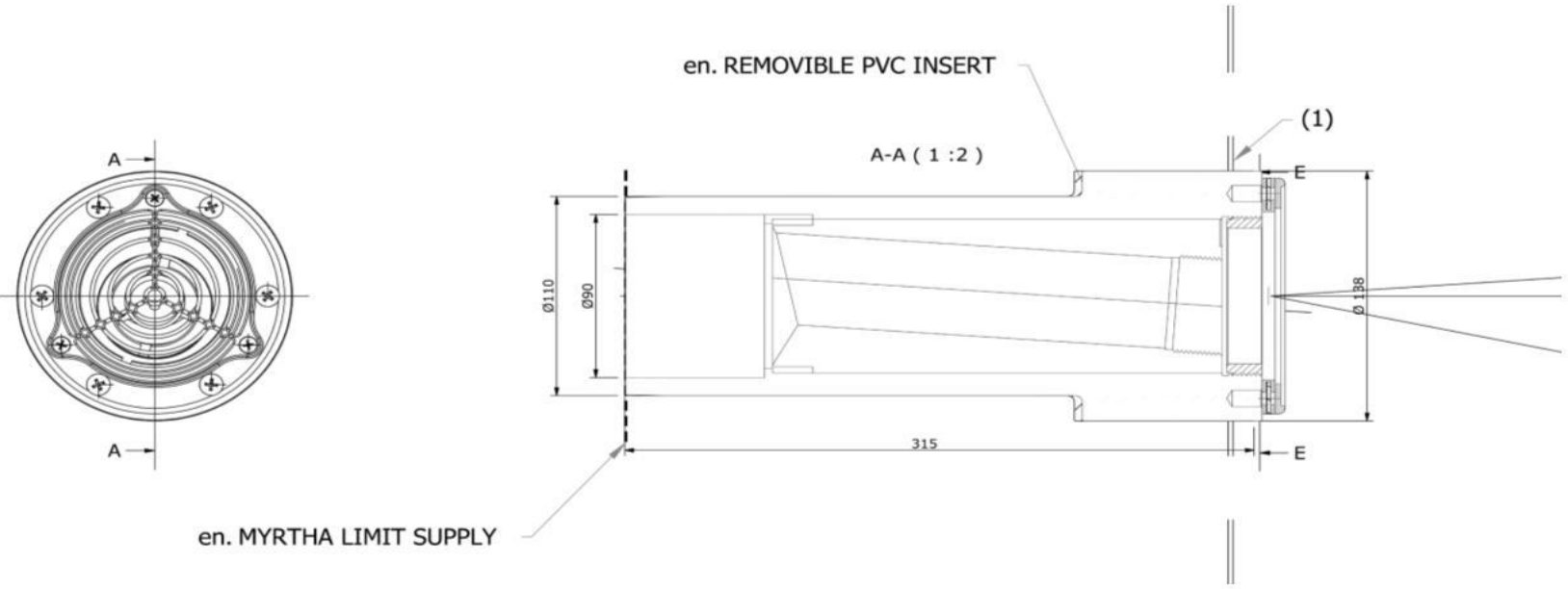
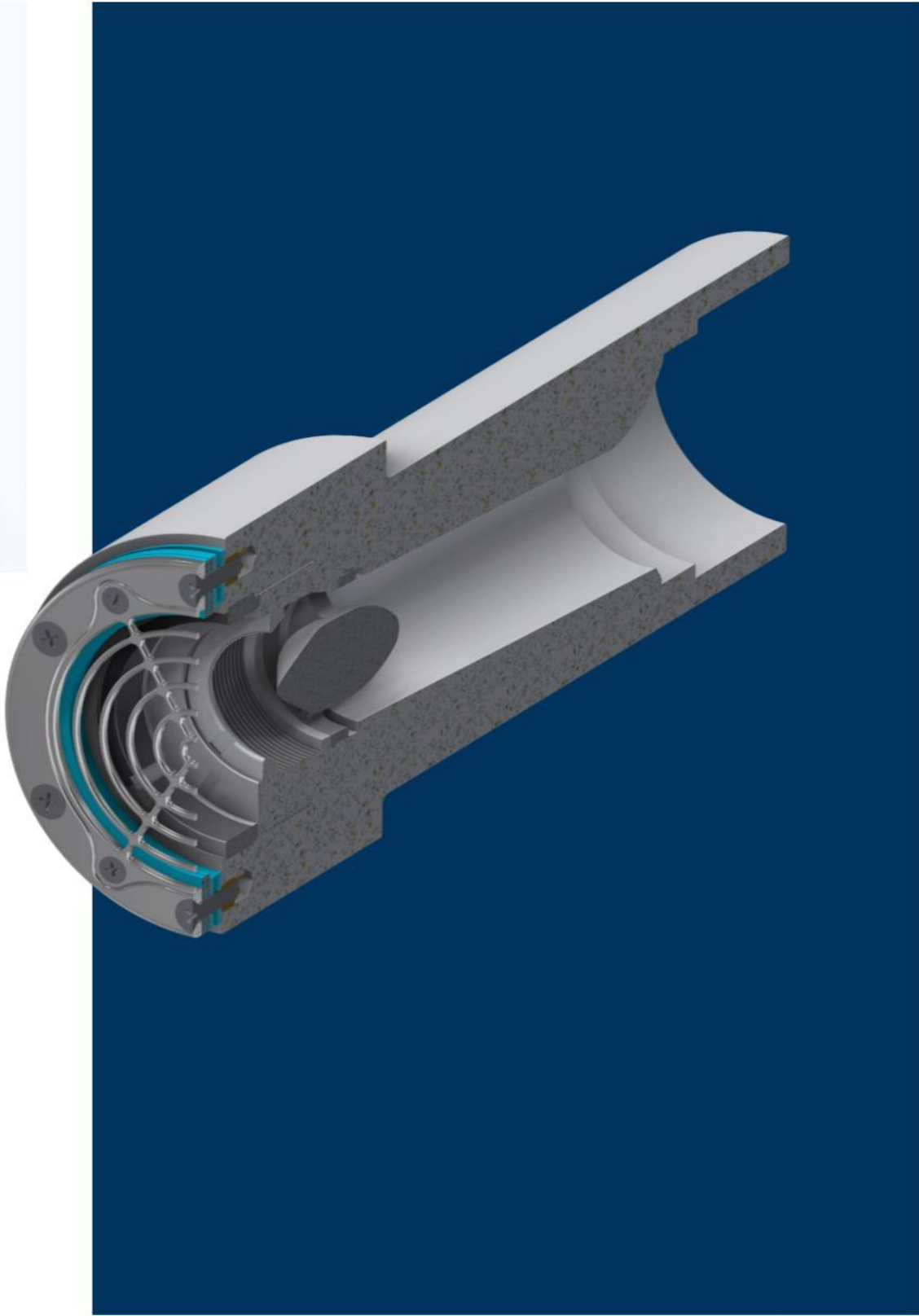
ENDLESS SURF ANALYSIS

The geometry of the fluid is divided in small cells creating a mesh, Each cell is programmed to be analyzed for velocity, pressure, temperature, and is based on Endless Surf design inputs.

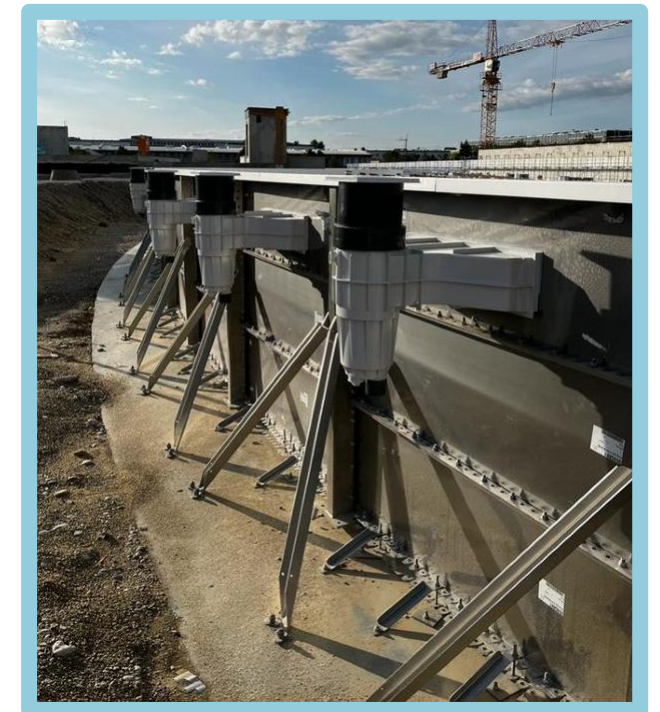
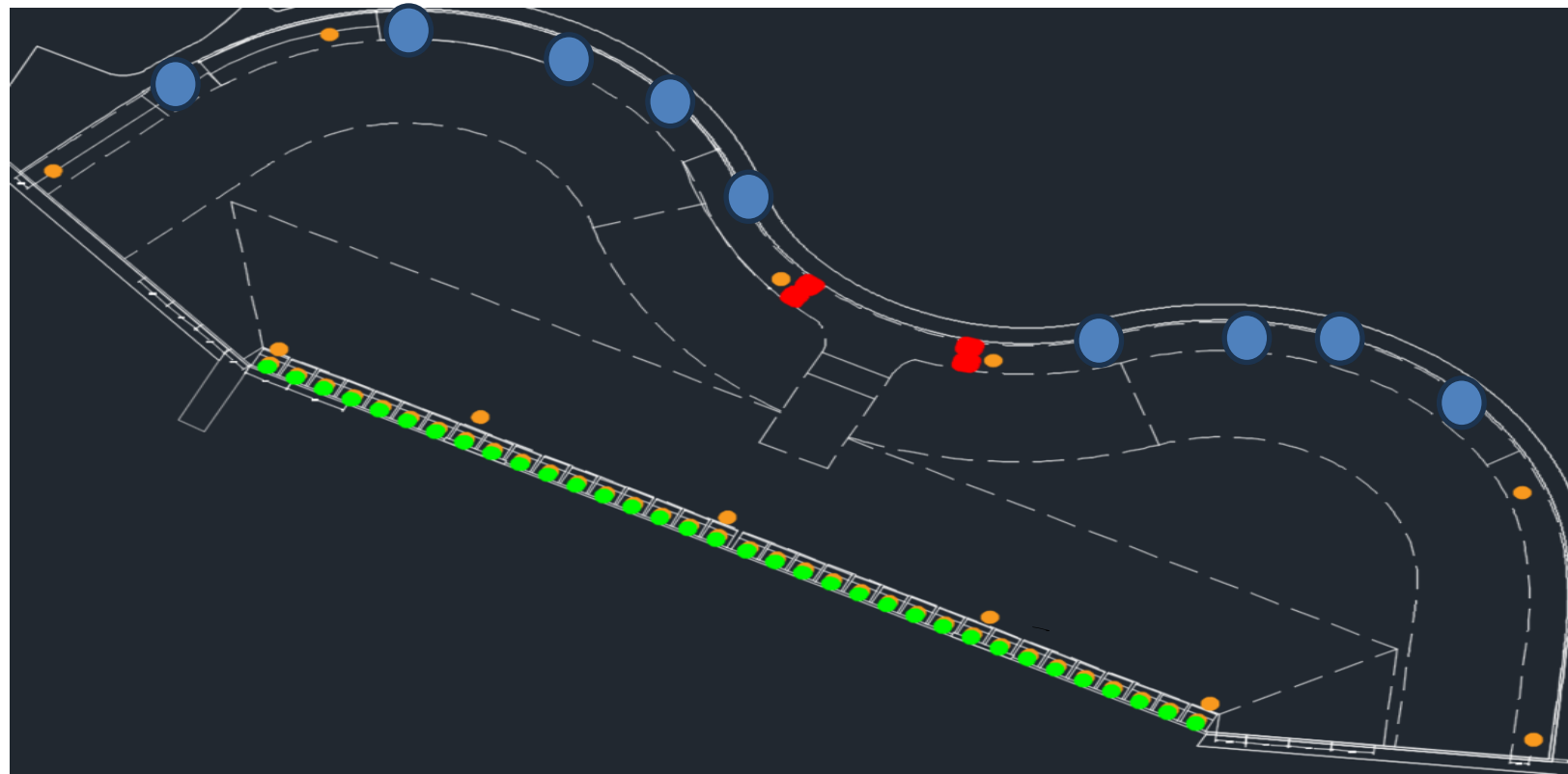
The output of the CFD analysis performed by Myrtha Lab, using Myrtha inlets (Strahlenturbolenz) shows how the water circulation is optimal and guarantees the passing of the “dye test”.



WATER CIRCULATION – MYRTHA STZ ADVANCED INLETS



WATER FILTRATION COMPONENTS



SKIMMER

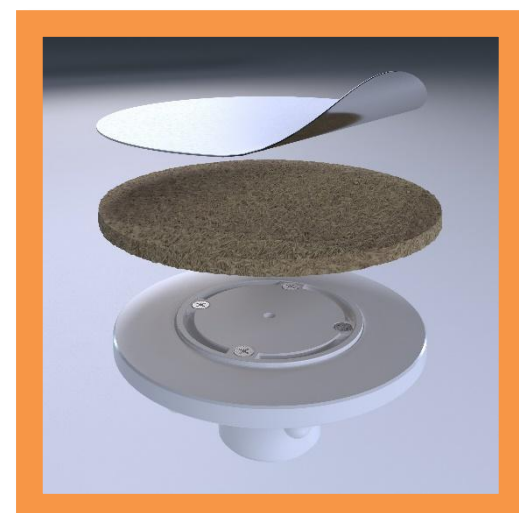
Installed on the external wall of the return channel.. With stainless steel mouth.

All Myrtha hydraulics will be connected to the main water treatment system (by third parties).



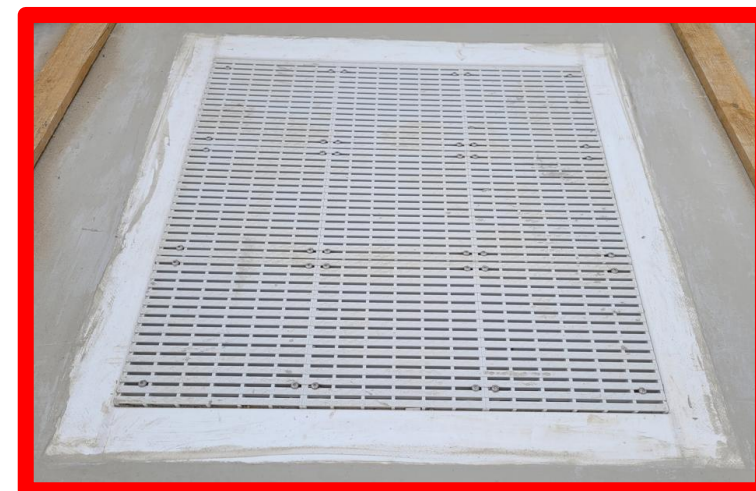
3" BOTTOM DRAIN

One drain for each caisson to drain every independent chamber.



2" SECONDARY DRAIN

Located in the deepest point of the basin (one each caisson, deeper area of the basin and return channel). It serves to drain any possible ground water migrating to the interstice in between the skin and concrete.



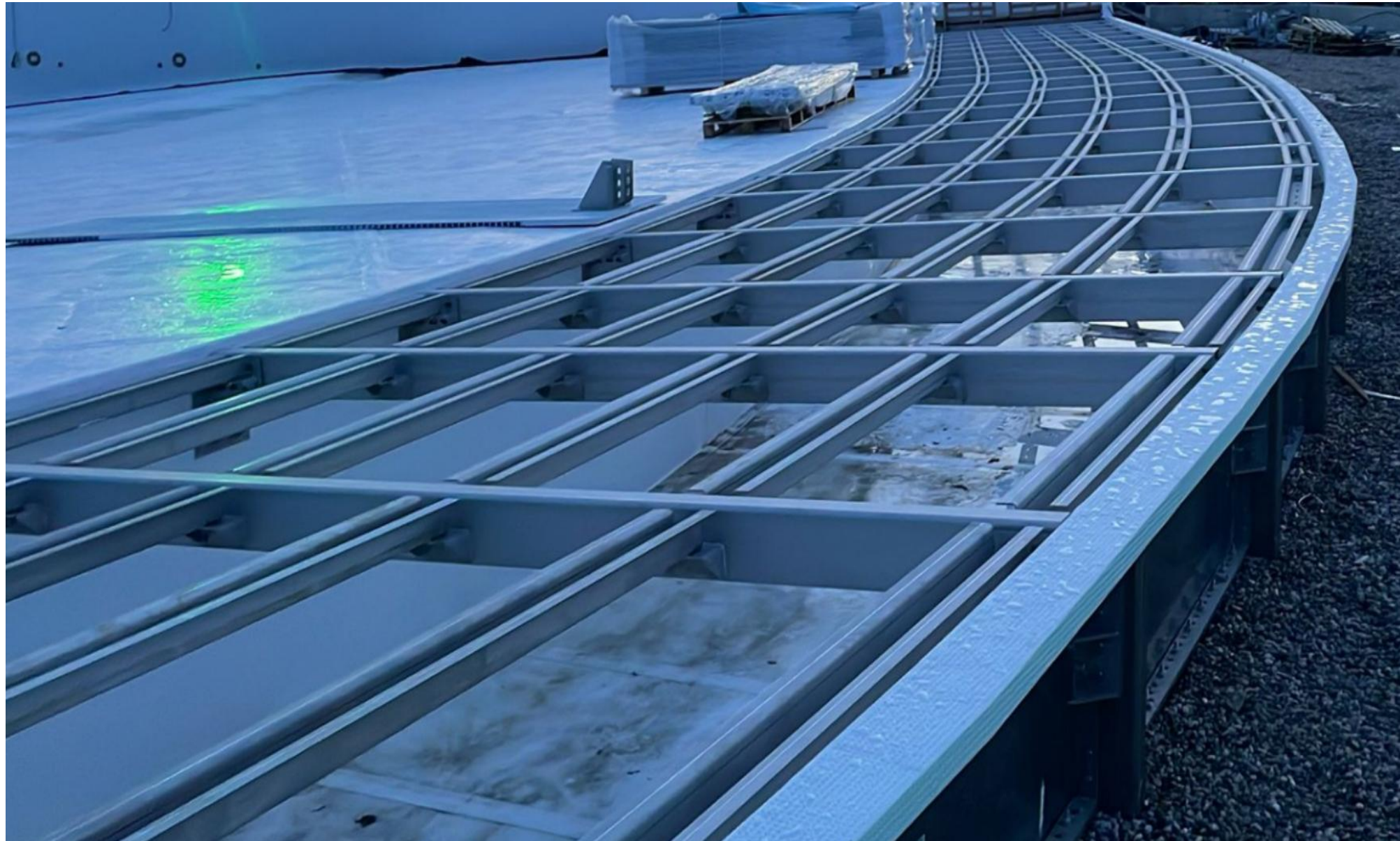
MAIN BOTTOM DRAINS

Located in the central area of the return channel. Includes relief-valve

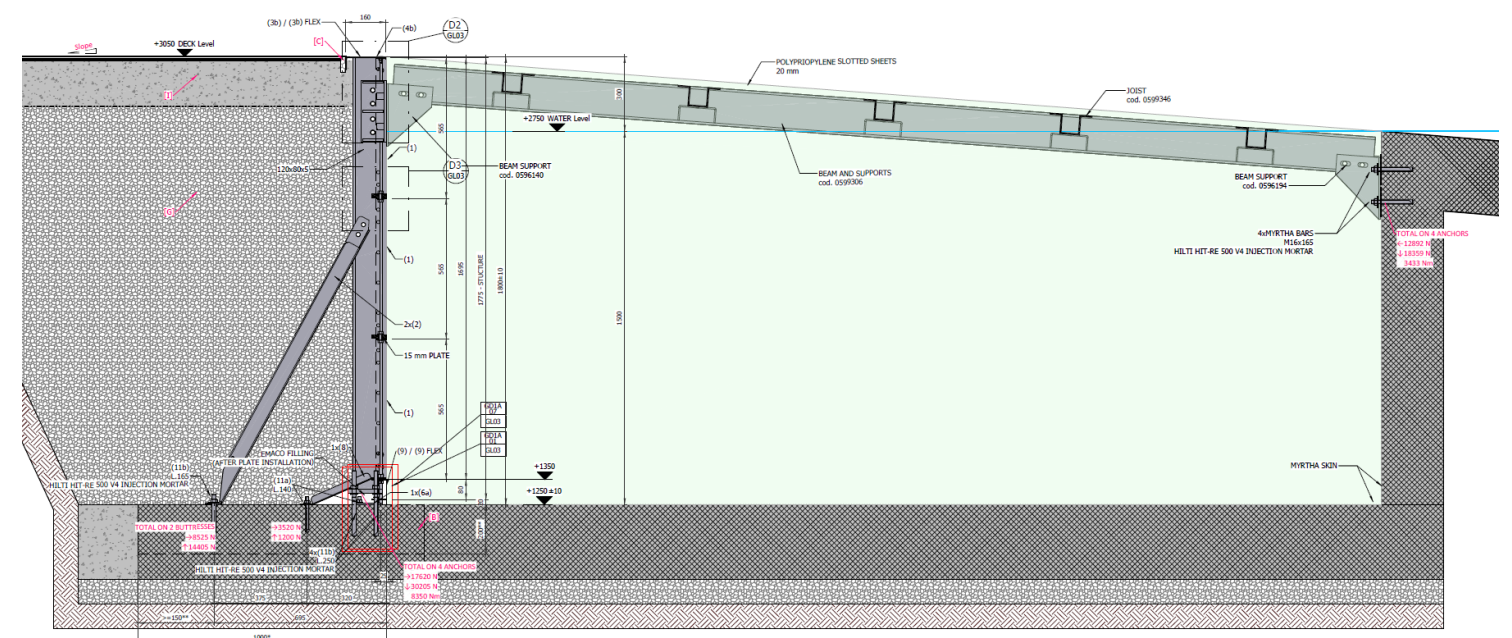
Surftown – Abdeckgitter Überlauf Rinne



GRATING DESIGN



- SS316 stainless steel frame made
- Slotted (30% openings) polyester panels
- Firmly anchored to the internal trench side and to Myrtha structure
- Designed to withstand 500 Kg/m²



GRATINGS



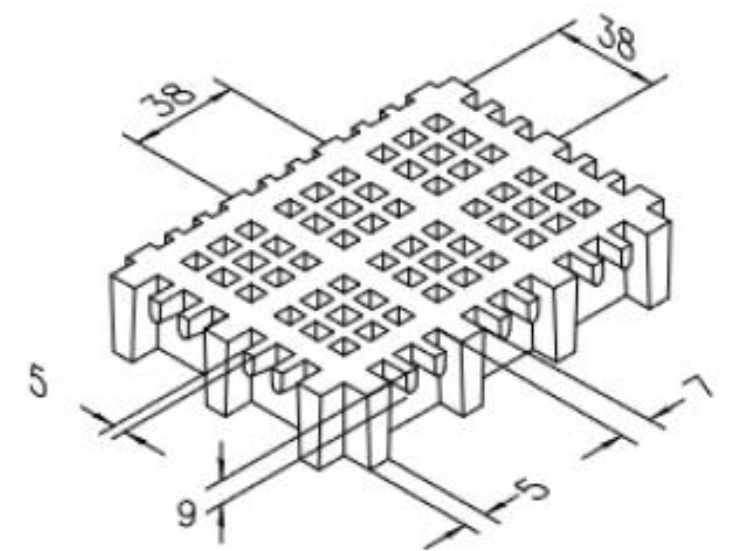
Material: Heavy –Duty self-extinguishing polyester (Level Bfl-s1 EN 13501-1)

Color: White or any RAL

Surface finish: Q-PAINT – Non-slip suitable for bare feet (UNI EN 13451-1 and DIN 51097)

Nominal Load: > 500 Kg/m²

Weight: 16 Kg/m²



Surftown – Zubehör & Einbauteile



SUBMERGED LIGHTS



Myrtha submerged lights system is a set of products designed to guarantee high lighting performances in surf parks.

LED heavy duty lights with specific DMX Master Power

- 26/28 power LEDs/each
- 6000K Daylight
- Stainless steel front plate
- ABS housing
- Safety glass with stepped edge 5 mm
- 5 m special underwater cable 2 x 1.5 mm². Safety class III IP 68

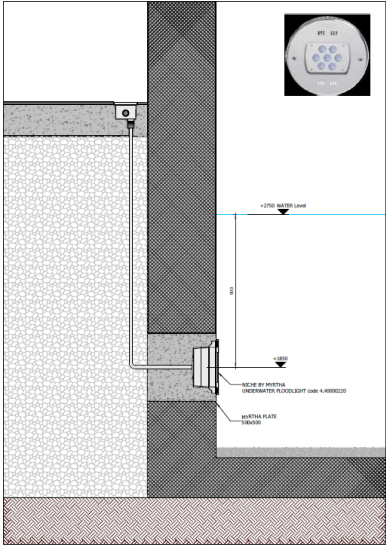
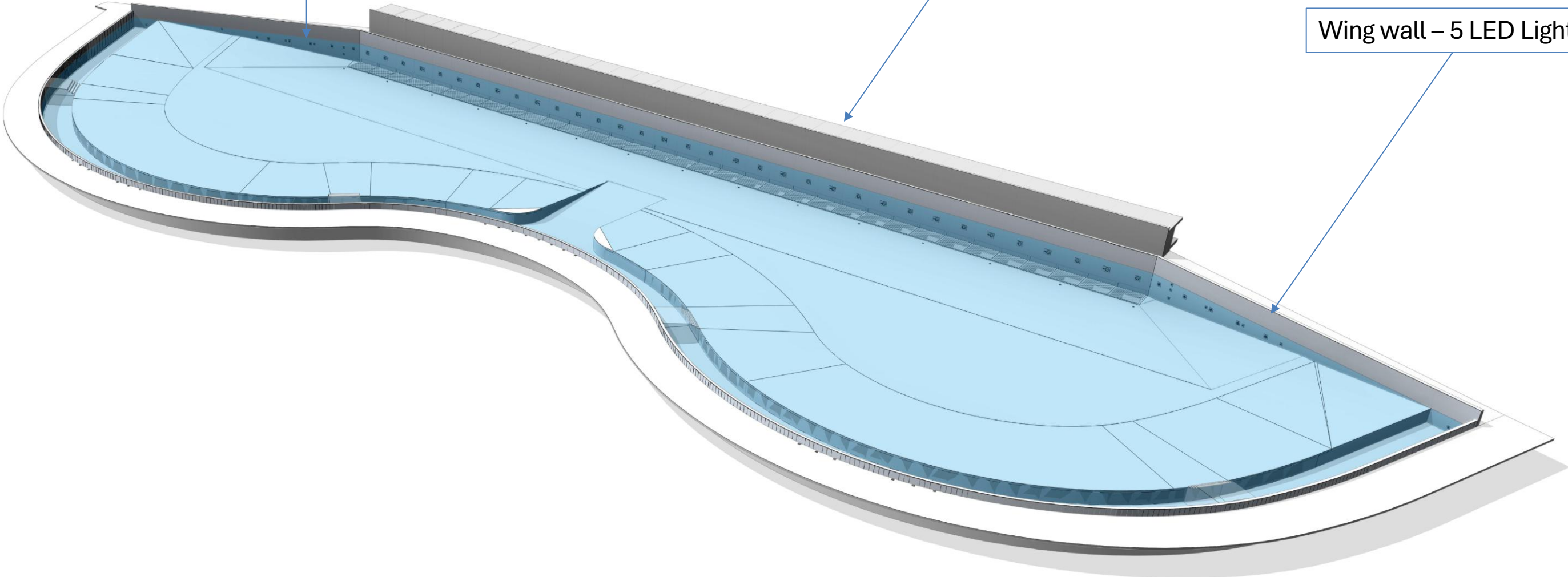


SUBMERGED LIGHTS POSITIONING

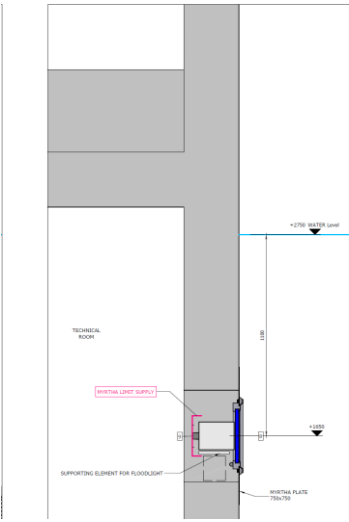
Front wave chambers wall – one per wave caisson - LED Lights

Wing wall – 5 LED Lights

Wing wall – 5 LED Lights



In the wing walls, the lights will be installed on the concrete walls (a 410mm hole will be necessary) , with a Myrtha external frame, then waterproofed to the Myrtha Skin all around. The lights will be conncted to a near accessible junction box (up to 3m).



In the front wave chambers wall, the lights will be installed on the concrete walls (a 410mm hole will be necessary) , with a Myrtha external frame, then waterproofed to the Myrtha Skin all around. The lights will be conncted to a near accessible junction box (up to 3m).



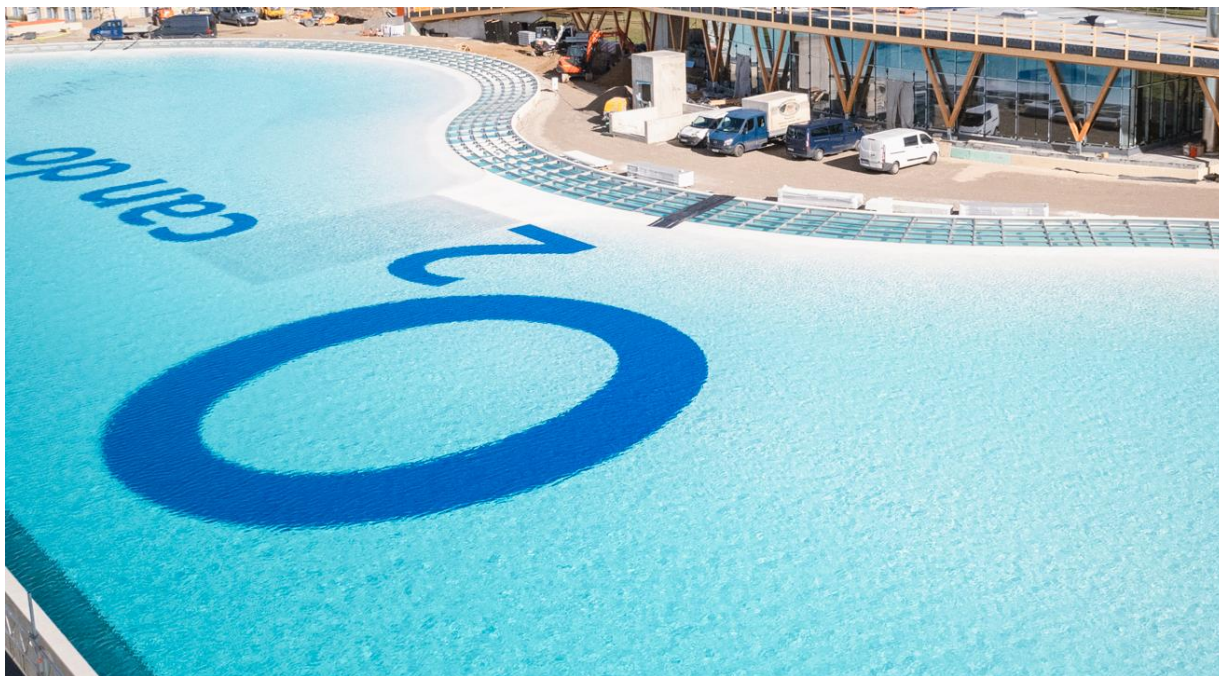
LOGO ON THE LAGOON FLOOR

The logo will be painted on the surf lagoon's floor with liquid PVC which guarantees a perfect match with the floor's surface (Myrtha skin – white technology).

The right positioning and reference points will be made through a «drone supported laser topographic» methodology to exactly match the drawing.

The painting will be made with multiple steps to guarantee the right outcome and quality.

The colour will stay stable for at least 5 years, afterwards the fading process will start to light the colour. It will be possible to repaint afterwards to get back to the original colour.



Pics just for reference

O2 Surftown MUC



Myrtha – what`s next





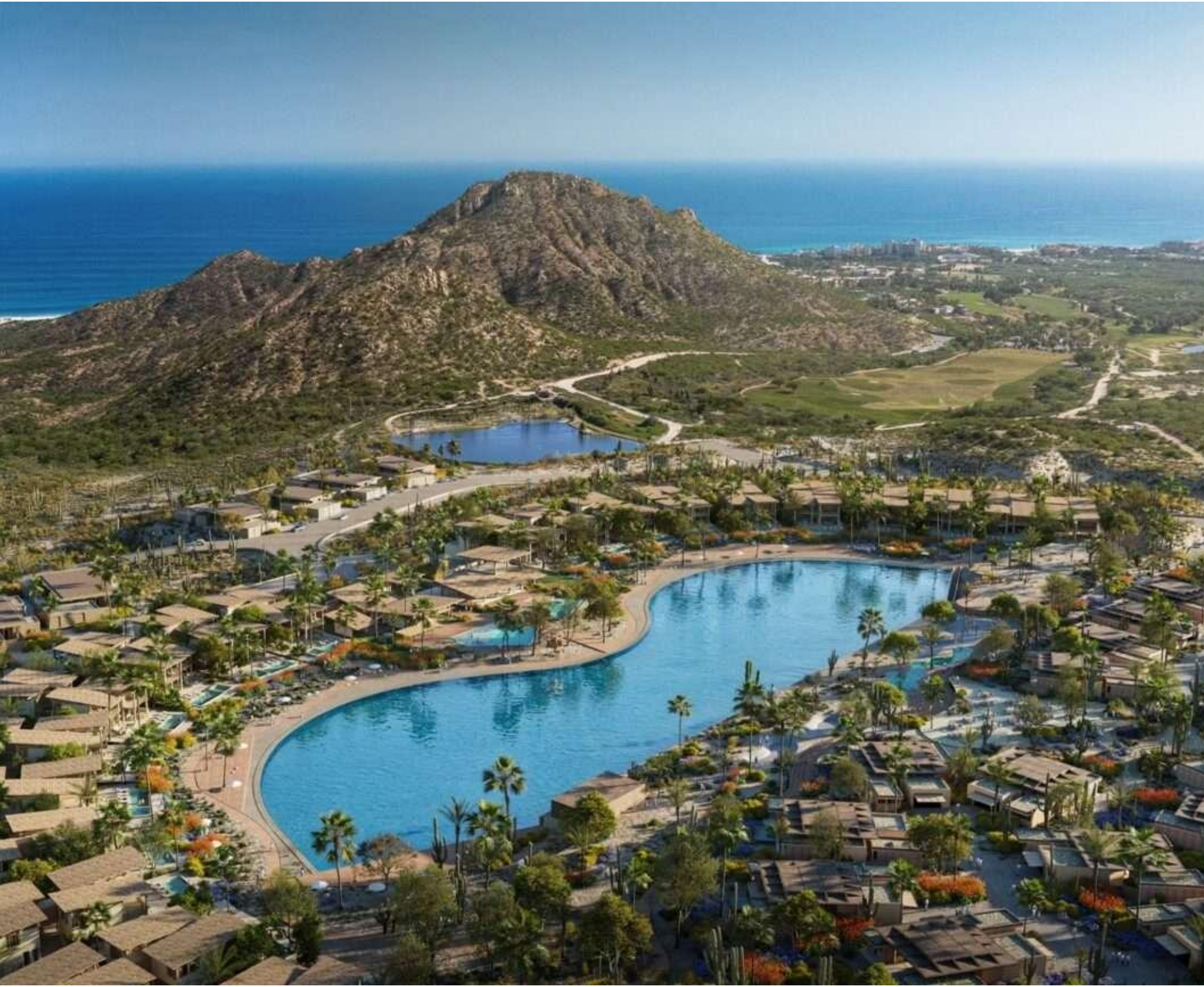
RED SEA

**SAUDI
ARABIA**



BRAZIL SURF CLUBE

BRAZIL



CABO REAL SURF CLUB



MEXICO



**PALM VALLEY GOLD
COAST**

**PARKWOOD,
AUSTRALIA**



CELEBRATION KEY™

AT GRAND BAHAMA



CELEBRATION KEY

**BAHAMAS
(CARNIVAL)**
(26,000 sm)



DOWNTOWN EL ALAMEIN

EGYPT
(200,000 sm)



THANK YOU.

